

### DESCRIPTION

The EVM3610-QV-00A is an evaluation board for MPM3610, a synchronous rectified, step-down Mini-Module regulator with built-in power MOSFETs, inductor and two capacitors.

The evaluation board can deliver a 1.2A continuous output current with excellent load and line regulation over a wide input supply range. External AAM pin provides selectable power save mode or force PWM mode.

Full protection features include over-current protection and thermal shut down.

The MPM3610 is available in a space-saving QFN20 (3mm x5mmx1.6mm) package.

### ELECTRICAL SPECIFICATION

| Parameter      | Symbol    | Value    | Units |
|----------------|-----------|----------|-------|
| Input Voltage  | $V_{IN}$  | 4.5 – 21 | V     |
| Output Voltage | $V_{OUT}$ | 3.3      | V     |
| Output Current | $I_{OUT}$ | 1.2      | A     |

### FEATURES

- Complete Switch Mode Power Supply
- 4.5V-to-21V Operating Input Range
- 1.2A Continuous Load Current
- Low  $R_{DS(ON)}$  Internal Power MOSFETs
- Fixed 2MHz Switching Frequency
- External AAM pin for Power-Save Mode Programming
- OCP Protection and Hiccup
- Thermal Shutdown
- Output Adjustable from 0.8V
- Available in QFN20 (3x5x1.6mm) Package

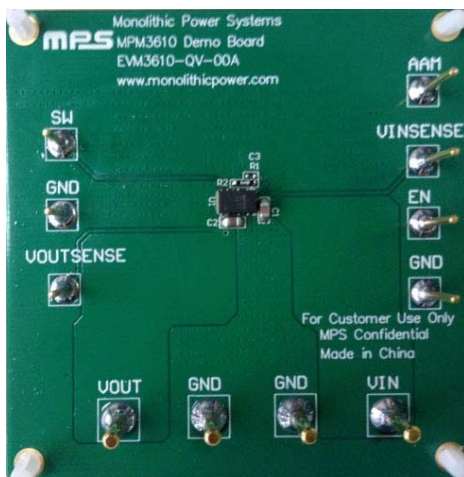
### APPLICATIONS

- Industrial Controls
- Medical and Imaging Equipment
- Telecom Applications
- Distributed Power Systems

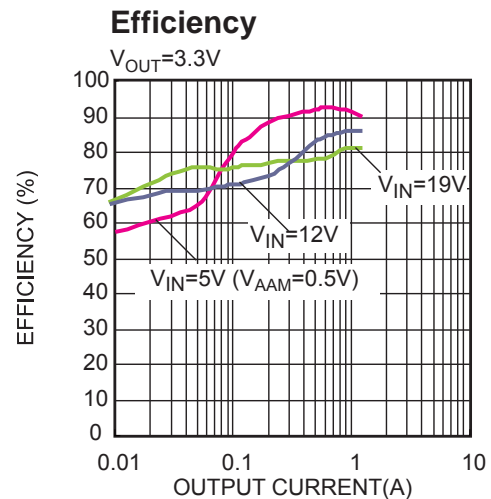
All MPS parts are lead-free and adhere to the RoHS directive. For MPS green status, please visit MPS website under Products, Quality Assurance page.

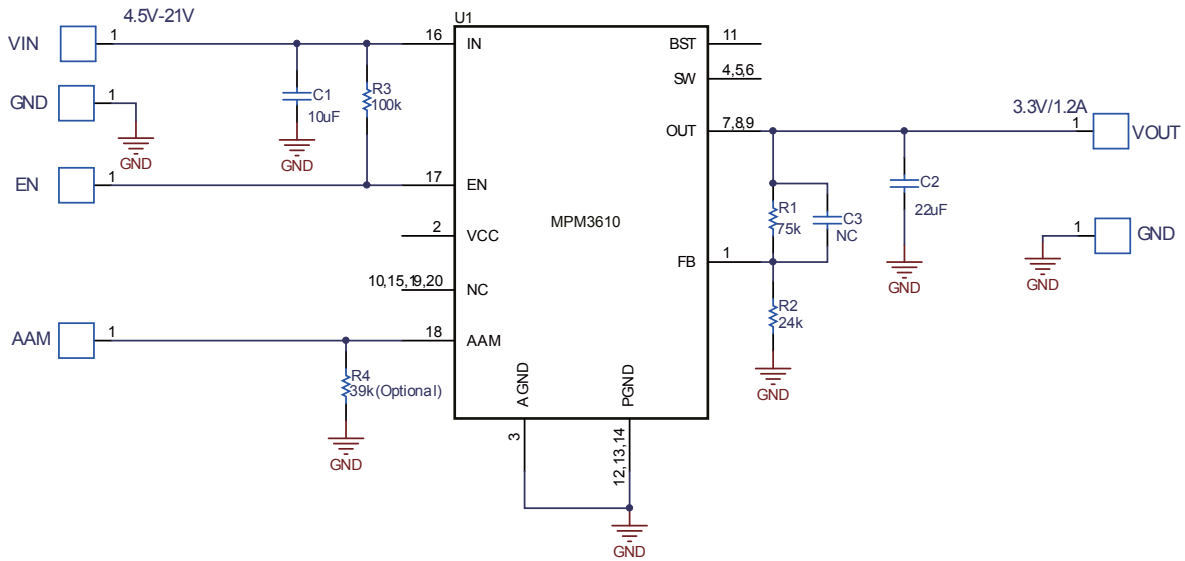
"MPS" and "The Future of Analog IC Technology" are registered trademarks of Monolithic Power Systems, Inc.

### EVM3610-QV-00A EVALUATION BOARD



| Board Number   | MPS IC Number |
|----------------|---------------|
| EVM3610-QV-00A | MPM3610GQV    |



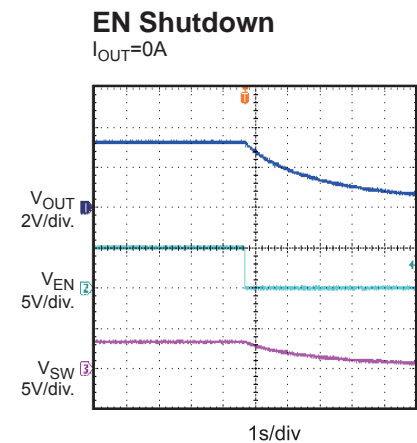
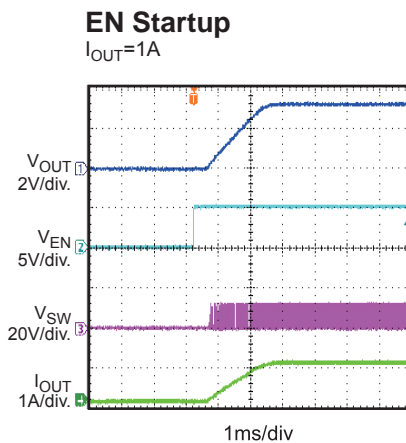
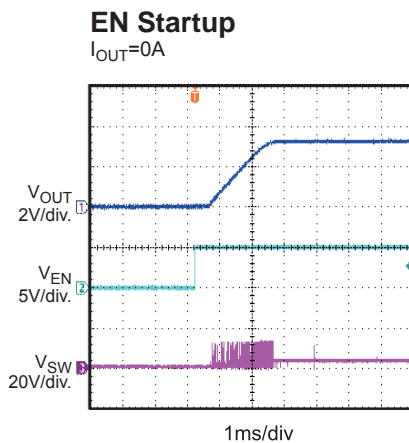
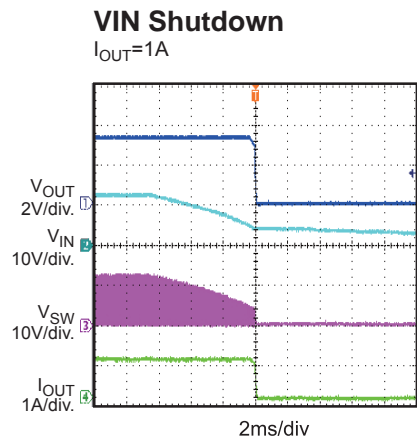
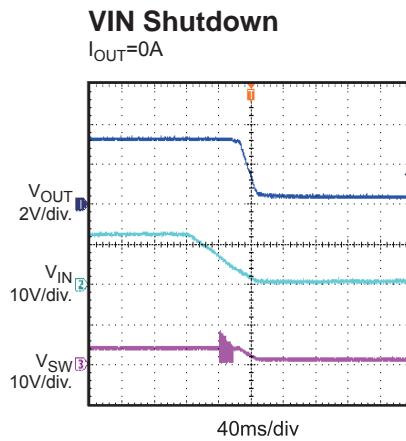
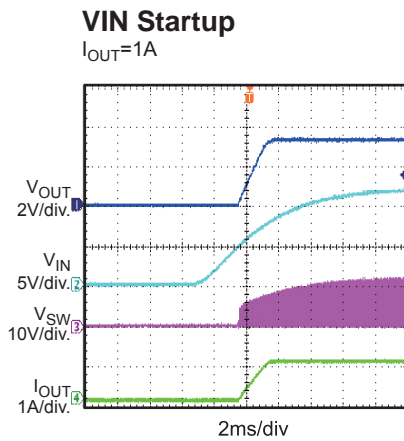
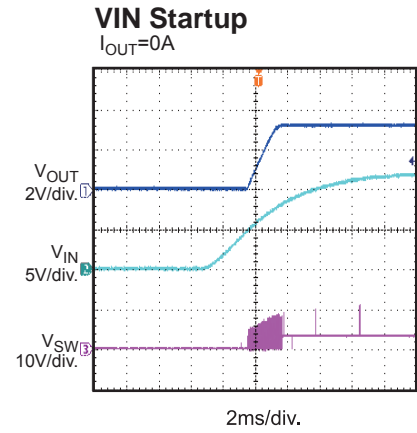
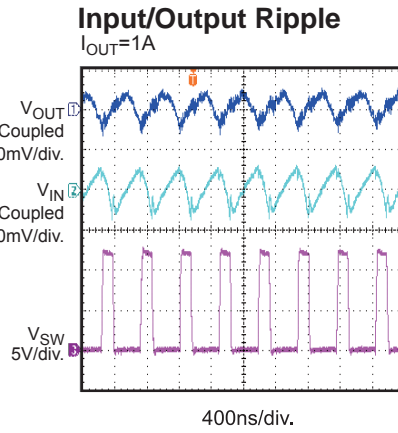
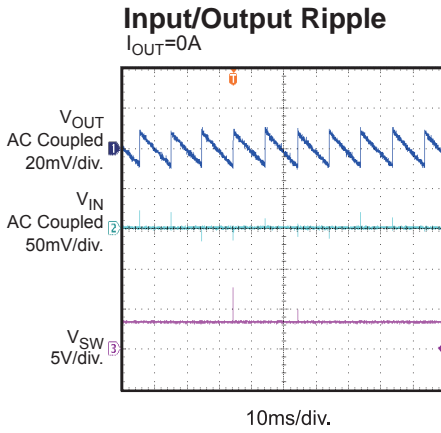
**EVALUATION BOARD SCHEMATIC**

**EVM3610-QV-00A BILL OF MATERIALS**

| Qty | Ref | Value   | Description                       | Package | Manufacturer | Manufacturer P/N   |
|-----|-----|---------|-----------------------------------|---------|--------------|--------------------|
| 1   | C1  | 10µF    | Ceramic Cap,25V,X5R               | 0805    | muRata       | GRM21BR61E106KA73L |
| 1   | C2  | 22µF    | Ceramic Cap,16V,X5R               | 0805    | muRata       | GRM219R61C226ME15L |
| 1   | C3  | NS      |                                   | 0402    |              |                    |
| 1   | R1  | 75k     | Thick Film Res., 1%               | 0402    | Any          |                    |
| 1   | R2  | 24k     | Thick Film Res., 1%               | 0402    | Any          |                    |
| 1   | R3  | 100k    | Thick Film Res., 1%               | 0402    | Any          |                    |
| 1   | R4  | 39k     | Thick Film Res., 1%               | 0402    | Any          |                    |
| 1   | U1  | MPM3610 | Synchronous Step-Down Mini-Module | QFN-20  | MPS          | MPM3610GQV         |

## EVB TEST RESULTS

Performance waveforms are tested on the evaluation board.

$V_{IN} = 12V$ ,  $V_{OUT} = 3.3V$ ,  $T_A = 25^\circ C$ , unless otherwise noted.

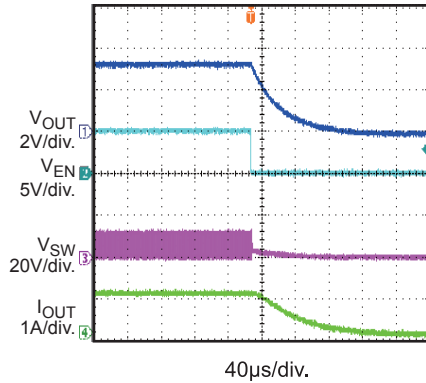


### EVB TEST RESULTS *(continued)*

Performance waveforms are tested on the evaluation board.  
 $V_{IN} = 12V$ ,  $V_{OUT} = 3.3V$ ,  $T_A = 25^\circ C$ , unless otherwise noted.

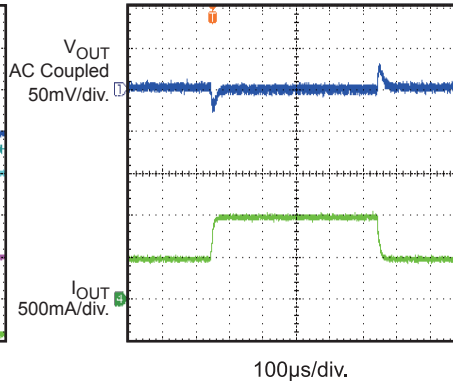
**EN Shutdown**

$I_{OUT} = 1A$

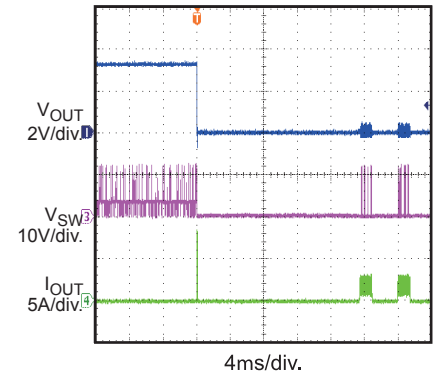


**Transient Response**

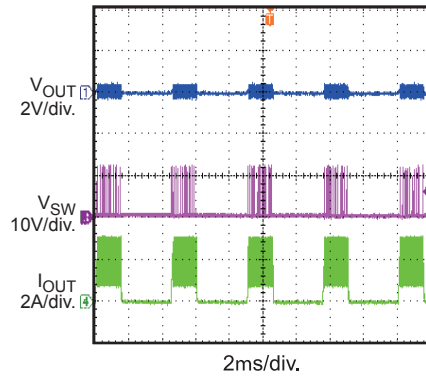
$I_{OUT} = 0.5A$  to  $1A$



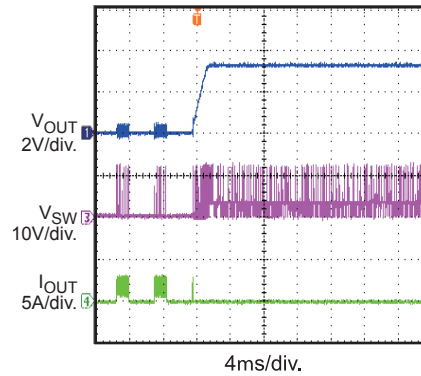
**Short Circuit Entry**



**Short Circuit Steady State**



**Short Circuit Recovery**



PRINTED CIRCUIT BOARD LAYOUT

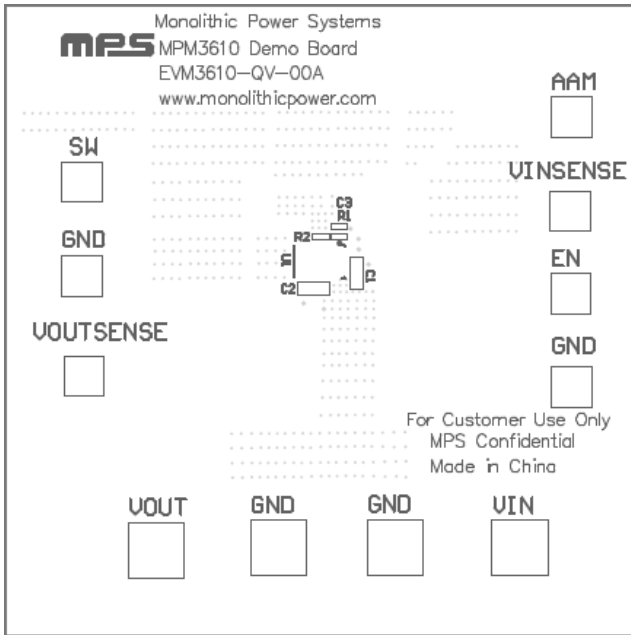


Figure 1—Top Silk Layer

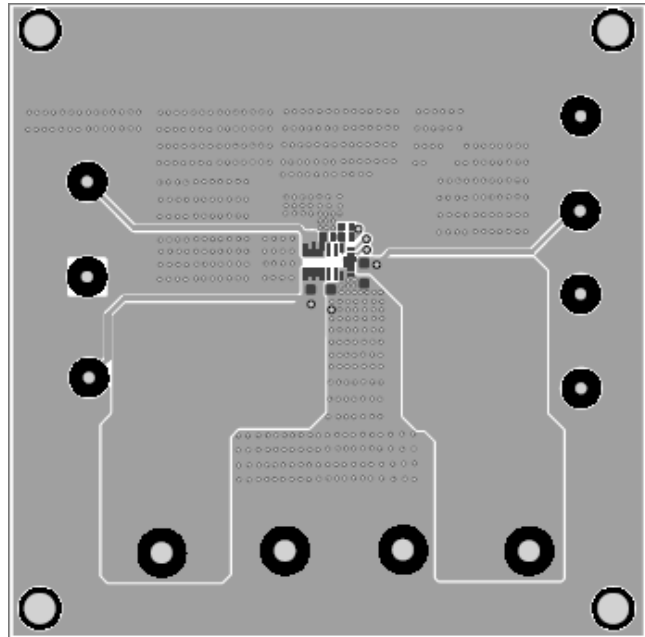


Figure 2—Top Layer

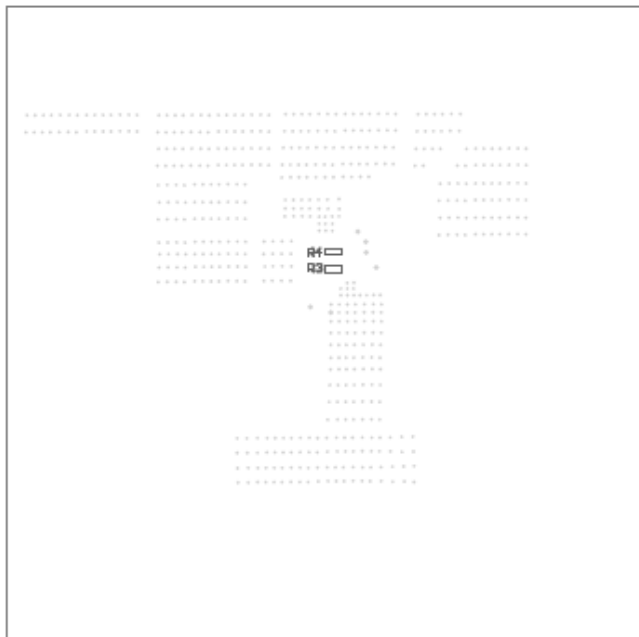


Figure 3—Bottom Silk Layer

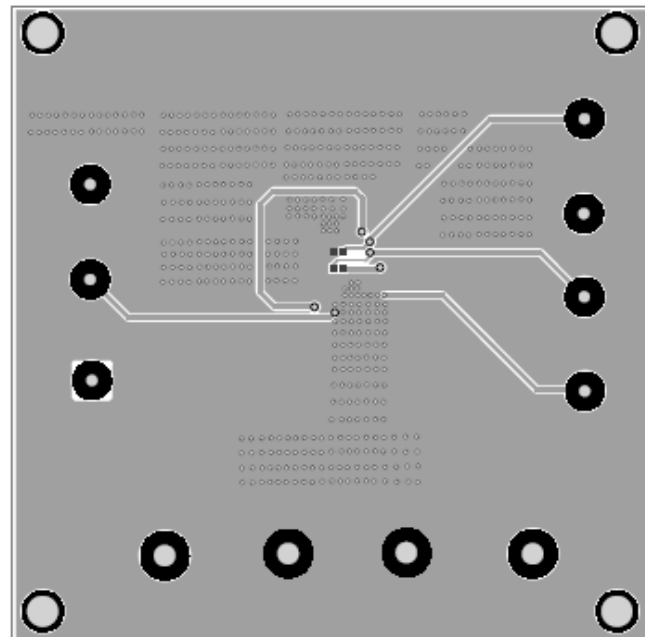


Figure 4—Bottom Layer

## QUICK START GUIDE

1. Connect the positive and negative terminals of the load to the VOUT and GND pins, respectively.
2. Preset the power supply output between 4.5V and 21V, and then turn off the power supply.
3. Connect the positive and negative terminals of the power supply output to the VIN and GND pins, respectively.
4. Turn the power supply on. The board will automatically start up.
5. To use the Enable function, apply a digital input to the EN pin. Drive EN higher than 1.4V to turn on the regulator, or less than 1.25V to turn it off.
6. Float AAM pin or drive AAM to a high level voltage to set MPM3610 work at force PWM mode.

**NOTICE:** The information in this document is subject to change without notice. Please contact MPS for current specifications. Users should warrant and guarantee that third party Intellectual Property rights are not infringed upon when integrating MPS products into any application. MPS will not assume any legal responsibility for any said applications.