



EVQ2244-D-00A

4A, 6V, Configurable-Frequency Synchronous Buck Converter Evaluation Board, AEC-Q100 Qualified

DESCRIPTION

The EVQ2244-D-00A is an evaluation board designed to demonstrate the capabilities of the MPQ2244, a configurable-frequency (300kHz to 2.2MHz), synchronous step-down converter with an integrated high-side MOSFET (HS-FET) and a synchronous rectifier (SR) for high efficiency operation without the need for an external Schottky diode.

The MPQ2244 can achieve up to 4A of continuous output current (I_{OUT}) across a 2.7V to 6V input voltage (V_{IN}) range, and generates an output voltage (V_{OUT}) as low as 0.606V. It is ideal for a wide range of applications, including automotive infotainment, clusters, and telematics, as well as portable instruments.

Advanced asynchronous modulation (AAM) mode provides high efficiency by reducing switching losses at light loads, while forced

continuous conduction mode (FCCM) offers a controllable frequency and a lower output voltage ripple. Peak current mode control provides excellent transient response and efficiency performance.

An open-drain power good (PG) signal indicates whether V_{OUT} is within 85% to 115% of the nominal voltage.

Full protection features include over-current protection (OCP) with valley current detection to avoid current runaway, short-circuit protection (SCP), reliable over-voltage protection (OVP), and auto-recovery thermal protection.

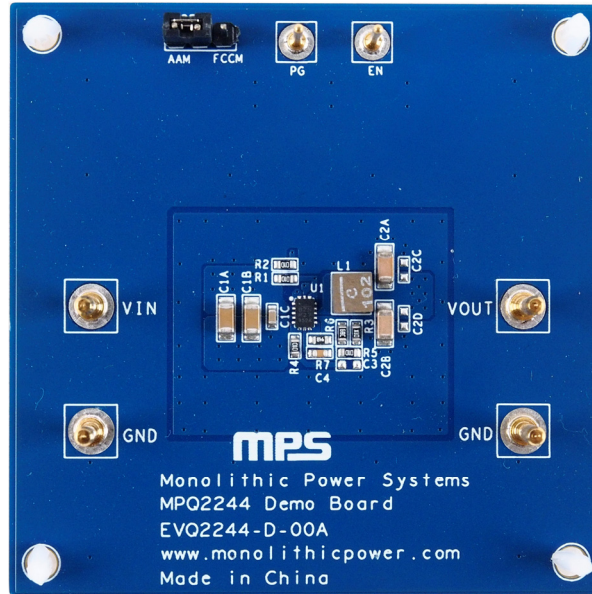
The EVQ2244-D-00A is fully assembled and tested. The MPQ2244 is available in a QFN-9 (2mmx3mm) package, and is available in AEC-Q100 Grade 1.

PERFORMANCE SUMMARY

Specifications are at $T_A = 25^\circ\text{C}$, unless otherwise noted.

Parameters	Conditions	Value
Input voltage (V_{IN}) range		2.7V to 6V
Output voltage (V_{OUT})	$V_{IN} = 2.7\text{V to }6\text{V}$, $I_{OUT} = 0\text{A to }4\text{A}$	1.8V
Maximum output current (I_{OUT})	$V_{IN} = 2.7\text{V to }6\text{V}$	4A
Typical efficiency	$V_{IN} = 5\text{V}$, $V_{OUT} = 1.8\text{V}$, $I_{OUT} = 4\text{A}$	88.7%
Peak efficiency	$V_{IN} = 2.7\text{V}$, $V_{OUT} = 1.8\text{V}$, $I_{OUT} = 0.6\text{A}$	95.1%
Switching frequency (f_{sw})		2.1MHz

EVQ2244-D-00A EVALUATION BOARD



LxWxH (6.35cmx6.35cmx0.85cm)

Board Number	MPS IC Number
EVQ2244-D-00A	MPQ2244GDE-AEC1

QUICK START GUIDE

The EVQ2244-D-00A evaluation board is easy to set up and use to evaluate the MPQ2244's performance. For proper measurement equipment set-up, refer to Figure 2 on page 4 and follow the steps below:

1. Preset the power supply between 2.7V and 6V, then turn off the power supply.
2. Set the load current (I_{LOAD}) between 0A and 4A. Electronic loads represent a negative impedance to the regulator, and setting a current too high may trigger cycle-by-cycle OCP.
3. If longer cables are used between the source and the evaluation board (>0.5m total), place a damping capacitor at the input terminals.
4. Connect the power supply terminals to:
 - a. Positive (+): VIN
 - b. Negative (-): GND
5. Connect the load terminals to:
 - a. Positive (+): VOUT
 - b. Negative (-): GND
6. After making the connections, turn on the power supply.
7. To use the enable function, apply a digital input to the EN pin. Drive EN above 1.2V to turn the regulator on; drive EN below 0.4V to turn the regulator off. If the enable function is not used, EN can be connected directly to VIN.
8. The external resistor divider sets the output voltage (V_{OUT}) (see Figure 1).

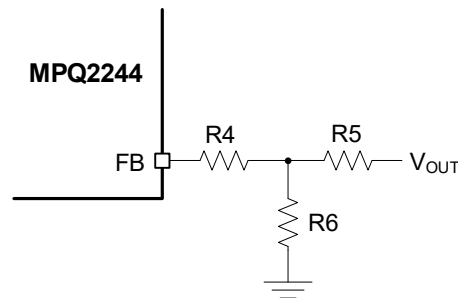


Figure 1: Feedback Divider Network with Adjustable Output

R4 and R5 are selected to be 100k Ω . R6 can then be calculated using Equation (1):

$$R6 = \frac{R5}{\frac{V_{OUT}}{0.606V} - 1} \quad (1)$$

Refer to the Application Information section in the MPQ2244 datasheet to calculate the inductance and output capacitance for different V_{OUT} values.

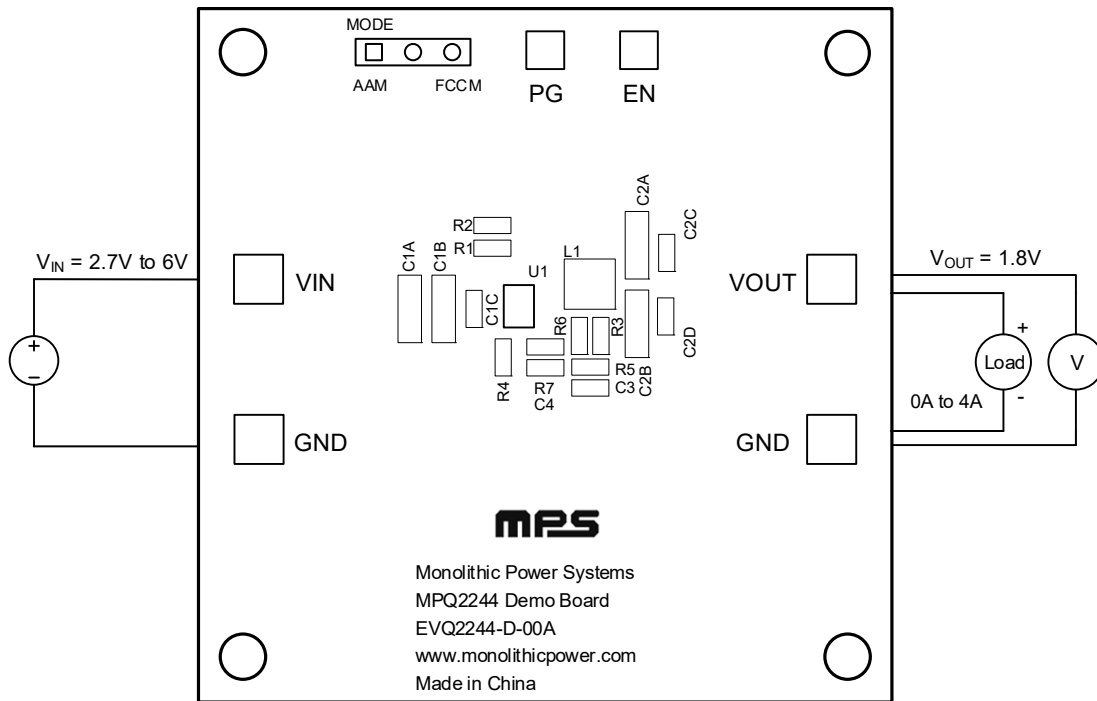


Figure 2: Measurement Equipment Set-Up

EVALUATION BOARD SCHEMATIC

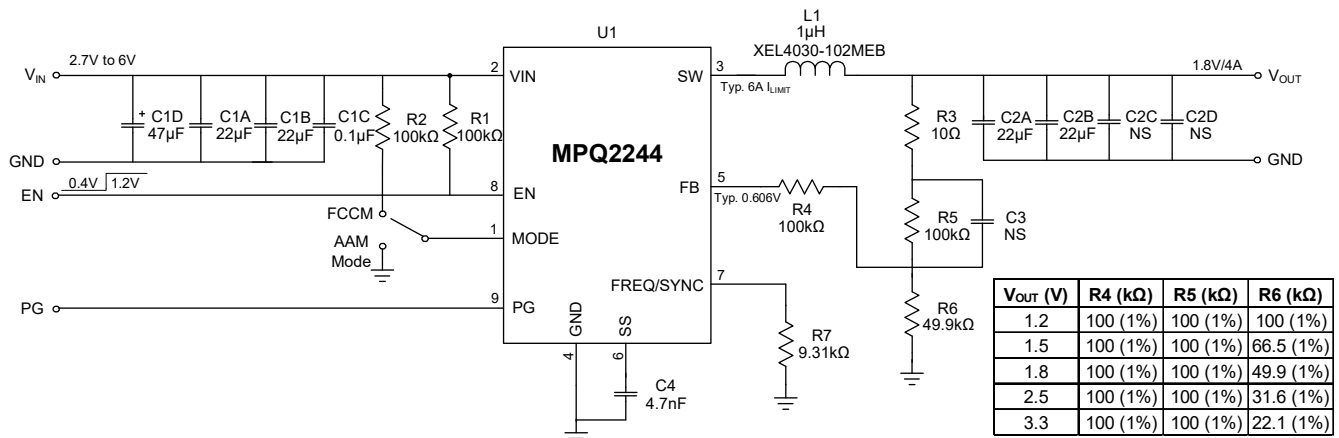
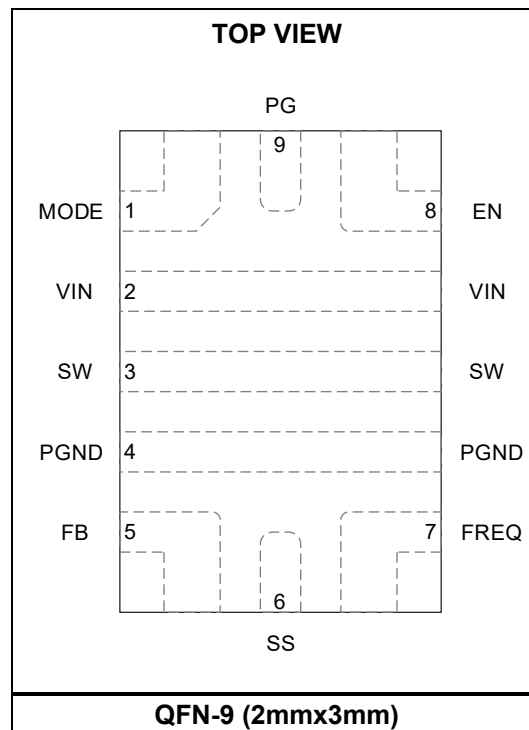


Figure 3: Evaluation Board Schematic

PACKAGE REFERENCE



EVQ2244-D-00A BILL OF MATERIALS

Qty	Ref	Value	Description	Package	Manufacturer	Manufacturer PN
1	C4	4.7nF	Ceramic capacitor, 50V, X7R	0603	Wurth	885012206087
2	C1A,C1B	22µF	Ceramic capacitor, 16V, X5R	1206	Murata	GRM31CR61C226ME15L
1	C1C	0.1µF	Ceramic capacitor, 16V, X7R	0603	Murata	GRM188R71C104KA01D
1	C1D	47µF	Electrolytic capacitor, 16V	SMD	Jianghai	VZ2-16V47
2	C2A, C2B	22µF	Ceramic capacitor, 10V, X7R	1206	Murata	GCJ31CR71A226ME01L
3	C3, C2C, C2D	NS				
1	L1	1µH	Inductor, 8.9mΩ, 9A	SMD	Coilcraft	XEL4030-102MEB
4	R1, R2, R4, R5	100kΩ	Film resistor, 1%	0603	Yageo	RC0603FR-07100KL
1	R3	10Ω	Film resistor, 1%	0603	Yageo	RC0603FR-0710RL
1	R6	49.9kΩ	Film resistor, 1%	0603	Yageo	RC0603FR-0749K9L
1	R7	9.31kΩ	Film resistor, 1%	0603	Yageo	RC0603FR-079K31L
4	VIN, GND, GND, VOUT	2mm	Golden pin	DIP	Custom ⁽¹⁾	
2	PG, EN	1mm	Golden pin	DIP	Custom ⁽¹⁾	
1	MODE	2.54mm	Test pin, 3 pins	DIP	Custom ⁽¹⁾	
1	U1	MPQ2244	4A, 6V, synchronous buck converter, AEC-Q100	QFN-9 (2mmx 3mm)	MPS	MPQ2244GDE-AEC1

Note:

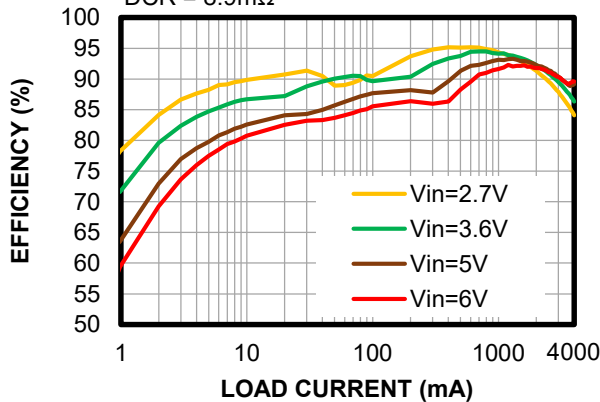
1) Contact an MPS FAE for more information regarding custom pins.

EVB TEST RESULTS

Performance curves and waveforms are tested on the evaluation board. $V_{IN} = 5V$, $V_{OUT} = 1.8V$, $T_A = 25^\circ C$, unless otherwise noted.

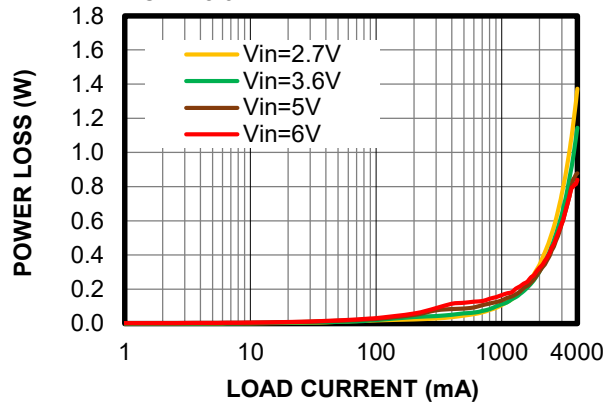
Efficiency vs. Load Current

AAM mode, XEL4030-102MEB,
DCR = 8.9mΩ



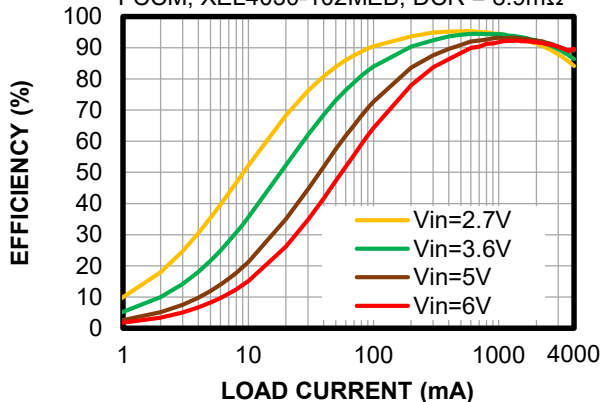
Power Loss vs. Load Current

AAM mode, XEL4030-102MEB,
DCR = 8.9mΩ



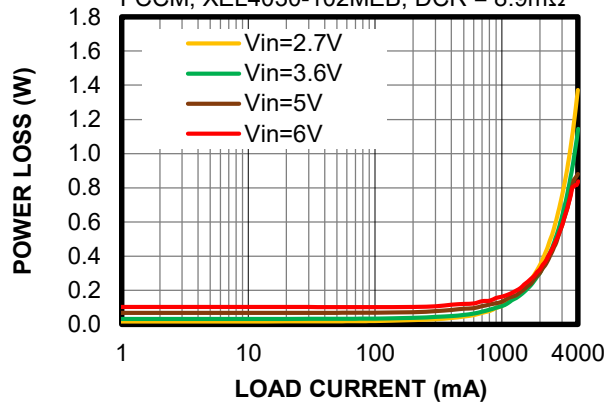
Efficiency vs. Load Current

FCCM, XEL4030-102MEB, DCR = 8.9mΩ



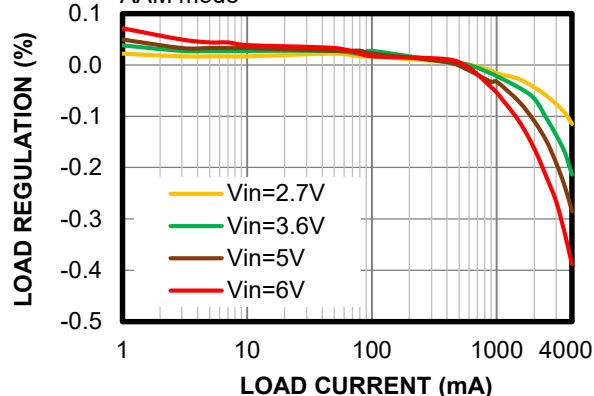
Power Loss vs. Load Current

FCCM, XEL4030-102MEB, DCR = 8.9mΩ



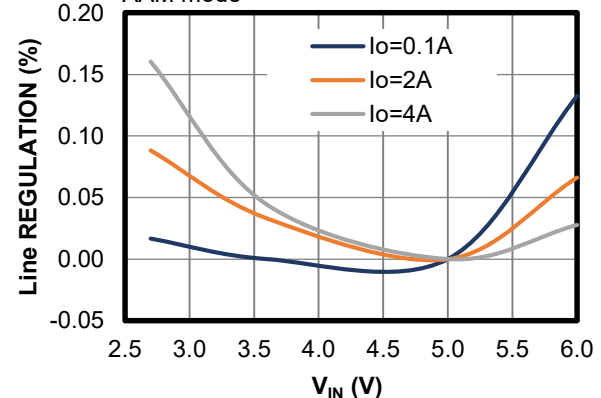
Load Regulation

AAM mode



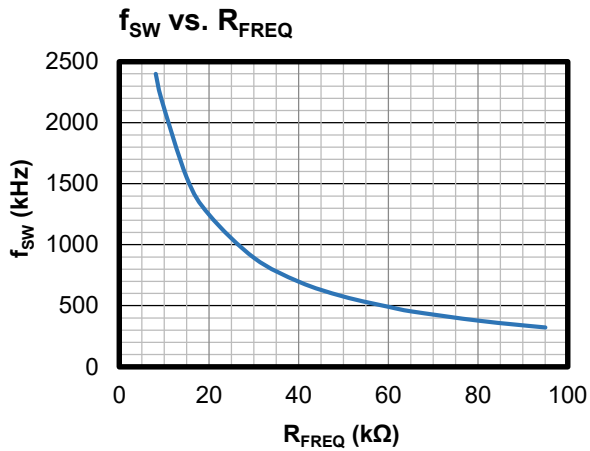
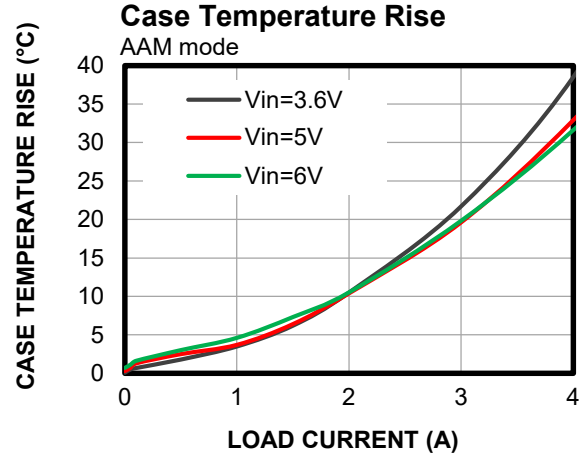
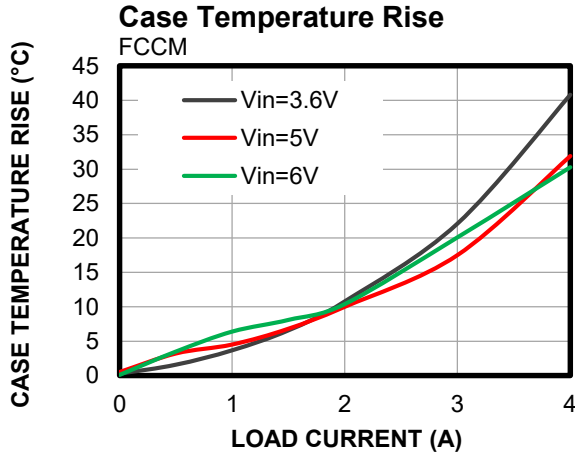
Line Regulation

AAM mode



EVB TEST RESULTS *(continued)*

Performance curves and waveforms are tested on the evaluation board. $V_{IN} = 5V$, $V_{OUT} = 1.8V$, $T_A = 25^\circ C$, unless otherwise noted.

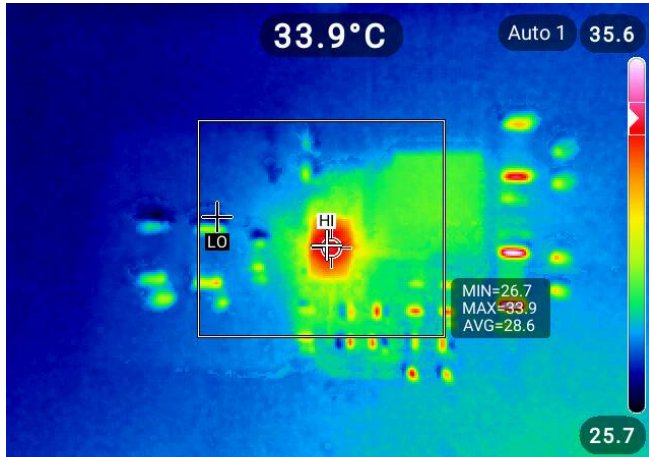


EVB TEST RESULTS *(continued)*

Performance curves and waveforms are tested on the evaluation board. $V_{IN} = 5V$, $V_{OUT} = 1.8V$, $T_A = 25^\circ C$, unless otherwise noted.

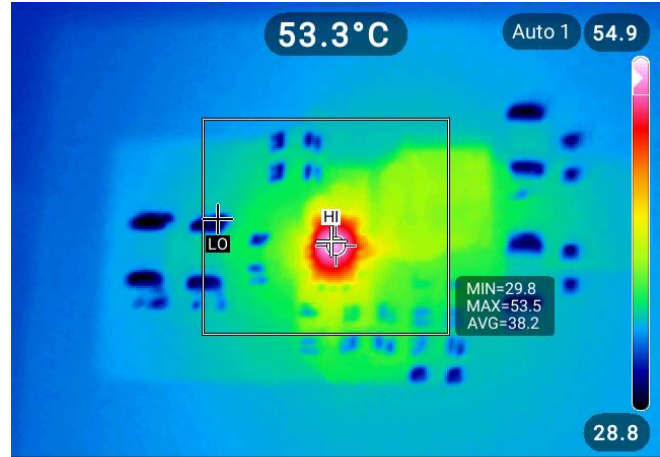
Thermal Performance

$I_{OUT} = 2A$, no forced airflow, $T_{CASE} = 33.9^\circ C$



Thermal Performance

$I_{OUT} = 4A$, no forced airflow, $T_{CASE} = 53.3^\circ C$

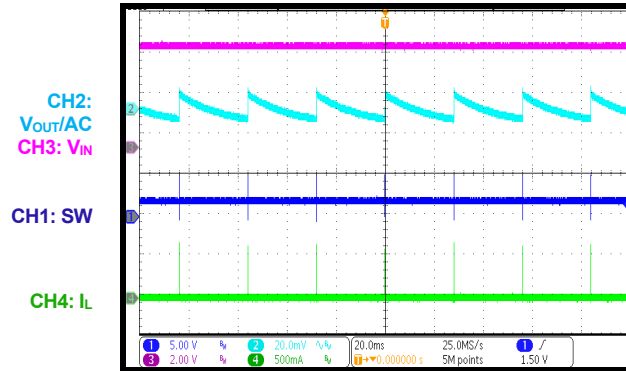


EVB TEST RESULTS (continued)

Performance curves and waveforms are tested on the evaluation board. $V_{IN} = 5V$, $V_{OUT} = 1.8V$, $T_A = 25^\circ C$, unless otherwise noted.

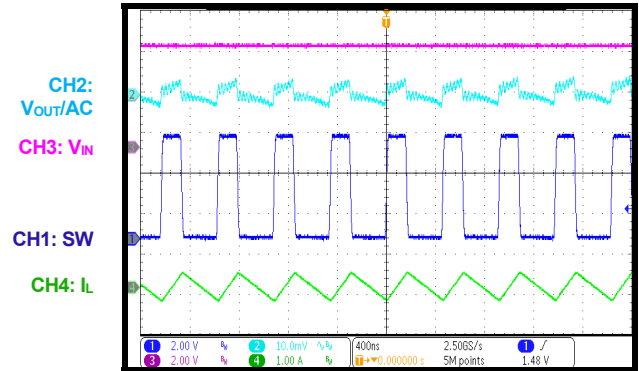
Steady State

$I_{OUT} = 0A$, AAM mode



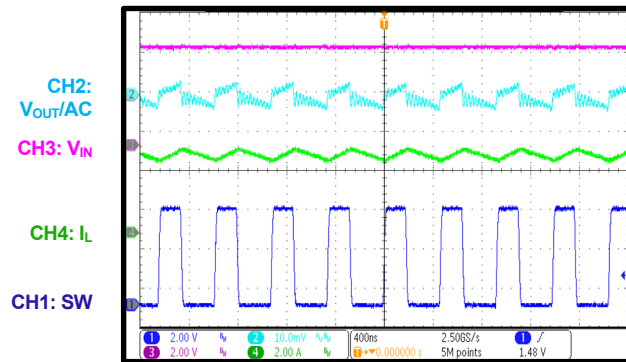
Steady State

$I_{OUT} = 0A$, FCCM



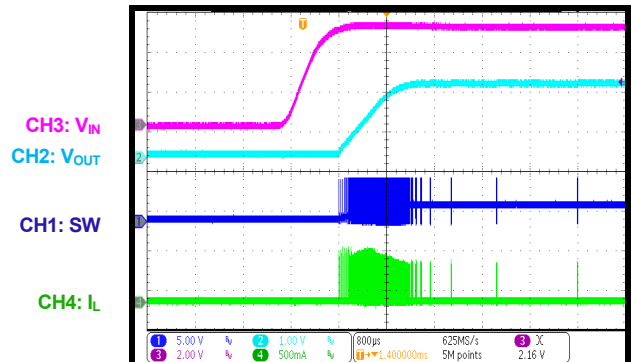
Steady State

$I_{OUT} = 4A$



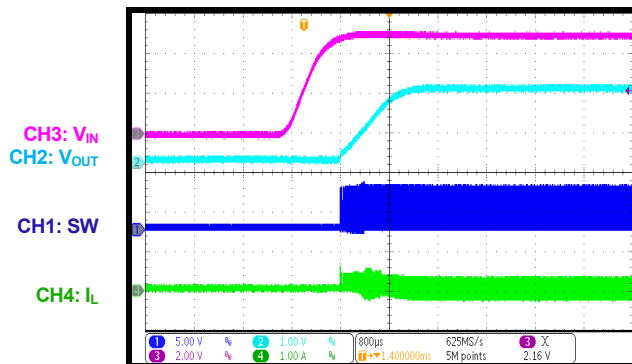
Start-Up through VIN

$I_{OUT} = 0A$, AAM mode



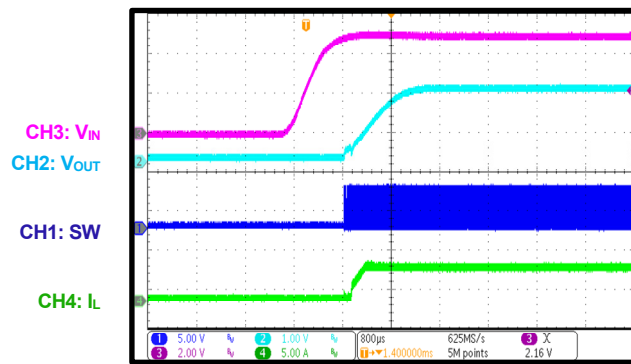
Start-Up through VIN

$I_{OUT} = 0A$, FCCM



Start-Up through VIN

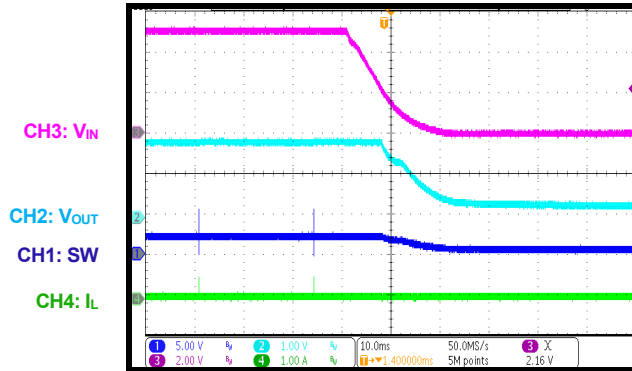
$I_{OUT} = 4A$



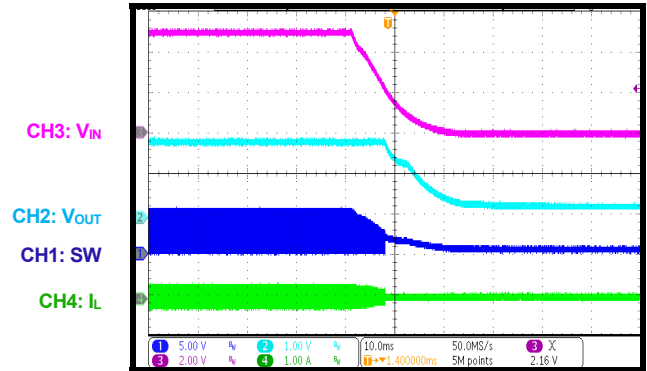
EVB TEST RESULTS (continued)

Performance curves and waveforms are tested on the evaluation board. $V_{IN} = 5V$, $V_{OUT} = 1.8V$, $T_A = 25^\circ C$, unless otherwise noted.

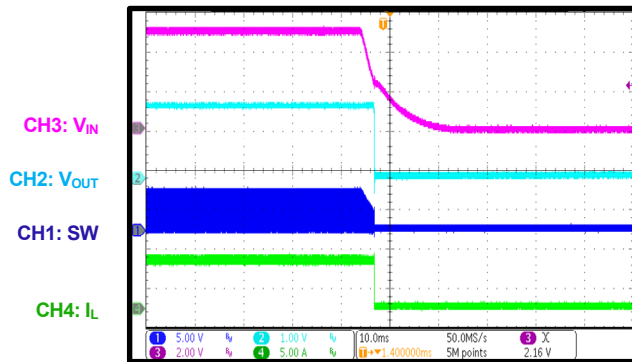
Shutdown through VIN
 $I_{OUT} = 0A$, AAM mode



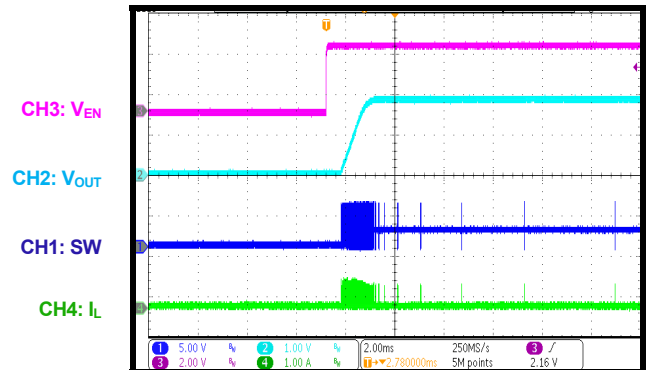
Shutdown through VIN
 $I_{OUT} = 0A$, FCCM



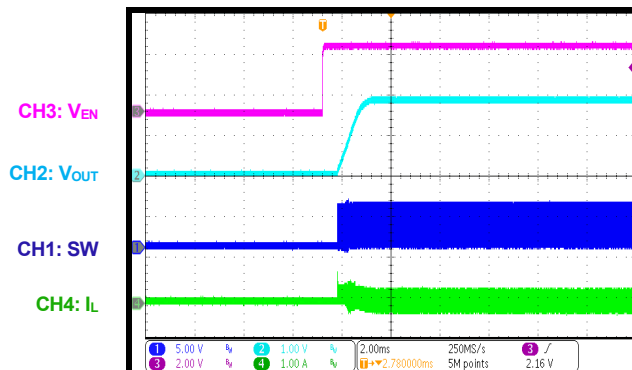
Shutdown through VIN
 $I_{OUT} = 4A$



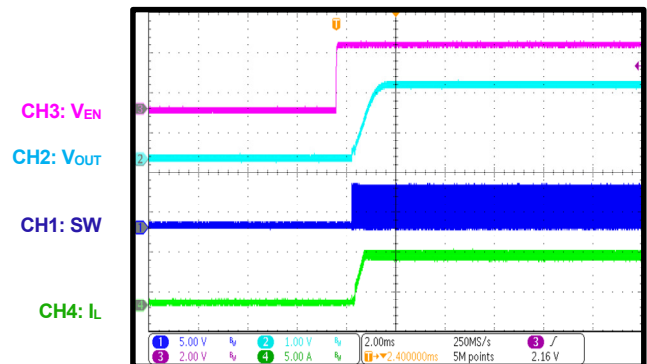
Start-Up through EN
 $I_{OUT} = 0A$, AAM mode



Start-Up through EN
 $I_{OUT} = 0A$, FCCM



Start-Up through EN
 $I_{OUT} = 4A$

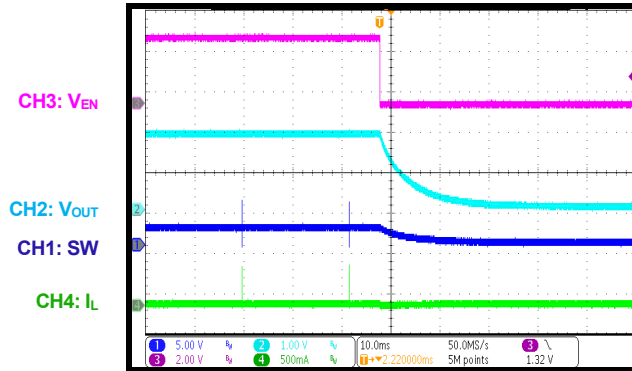


EVB TEST RESULTS (continued)

Performance curves and waveforms are tested on the evaluation board. $V_{IN} = 5V$, $V_{OUT} = 1.8V$, $T_A = 25^\circ C$, unless otherwise noted.

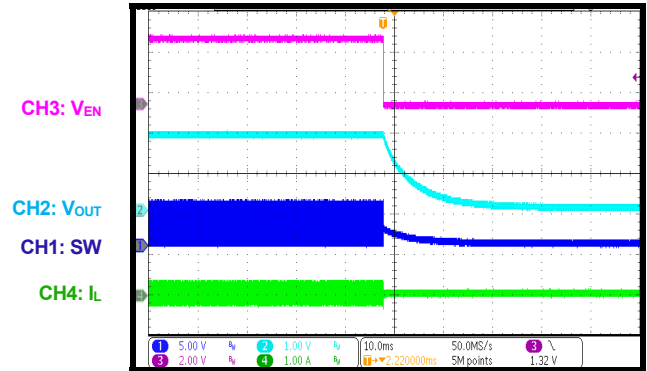
Shutdown through EN

$I_{OUT} = 0A$, AAM mode



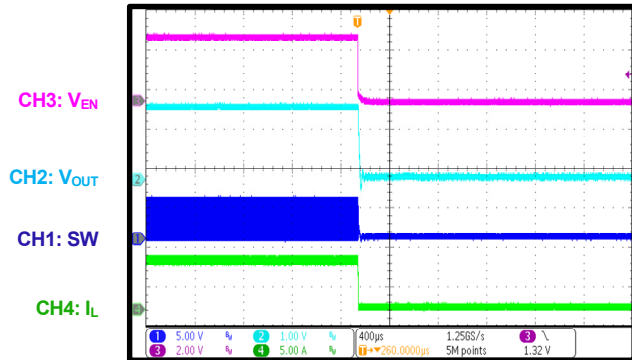
Shutdown through EN

$I_{OUT} = 0A$, FCCM



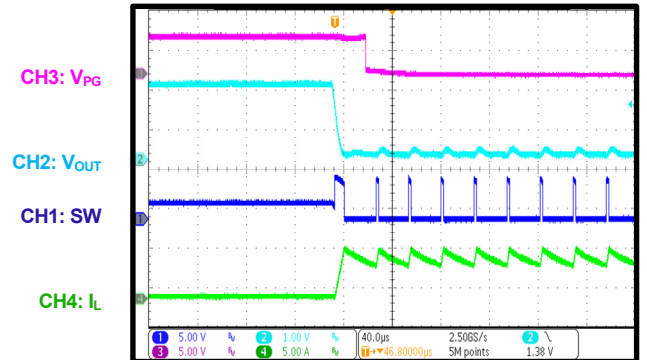
Shutdown through EN

$I_{OUT} = 4A$



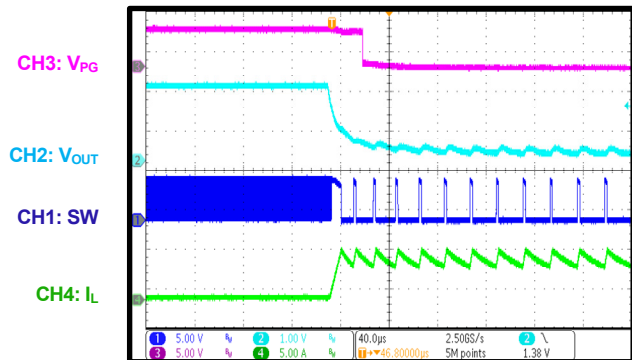
SCP Entry

$I_{OUT} = 0A$, AAM mode



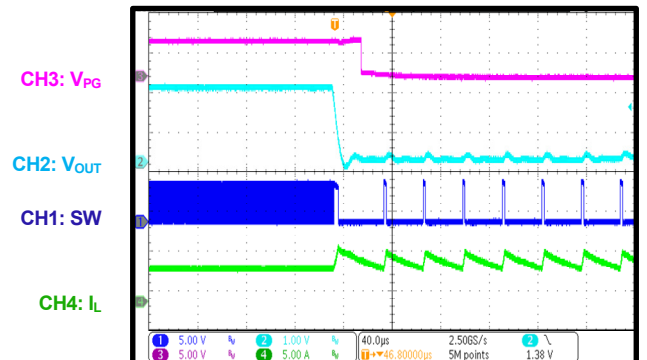
SCP Entry

$I_{OUT} = 0A$, FCCM



SCP Entry

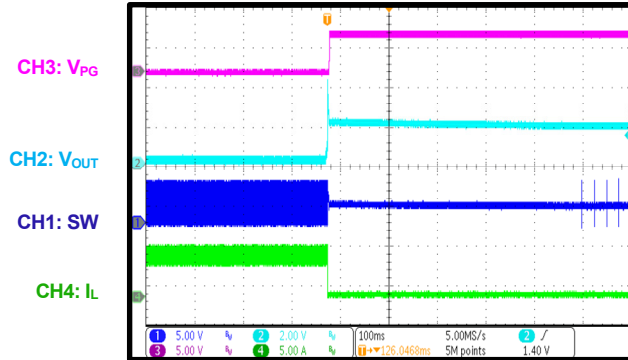
$I_{OUT} = 4A$



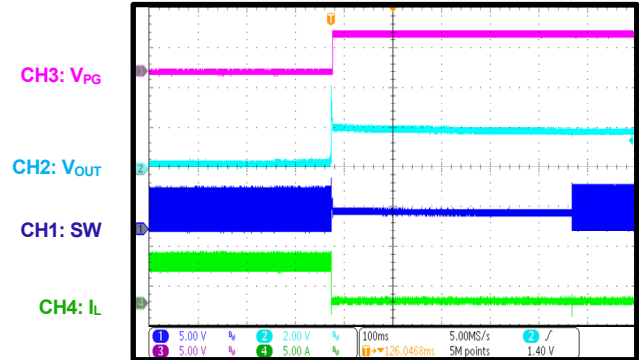
EVB TEST RESULTS (continued)

Performance curves and waveforms are tested on the evaluation board. $V_{IN} = 5V$, $V_{OUT} = 1.8V$, $T_A = 25^\circ C$, unless otherwise noted.

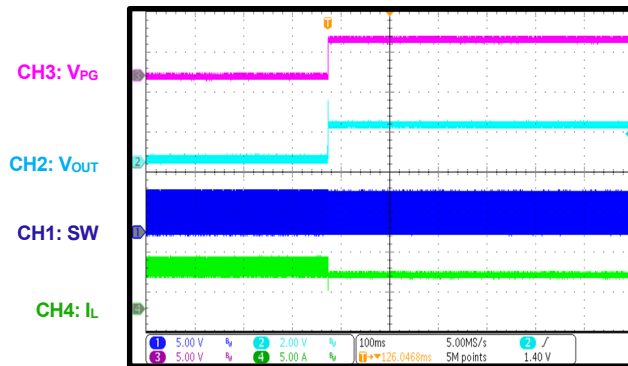
SCP Recovery
 $I_{OUT} = 0A$, AAM mode



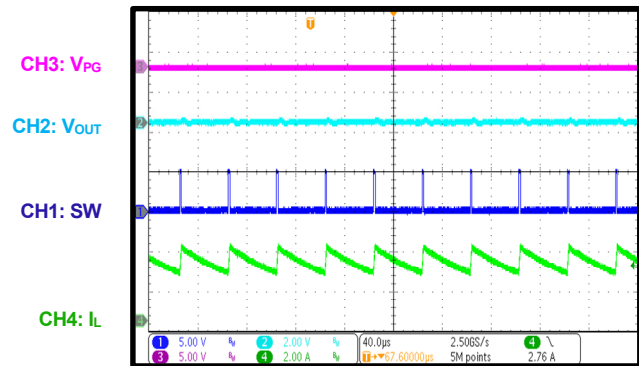
SCP Recovery
 $I_{OUT} = 0A$, FCCM



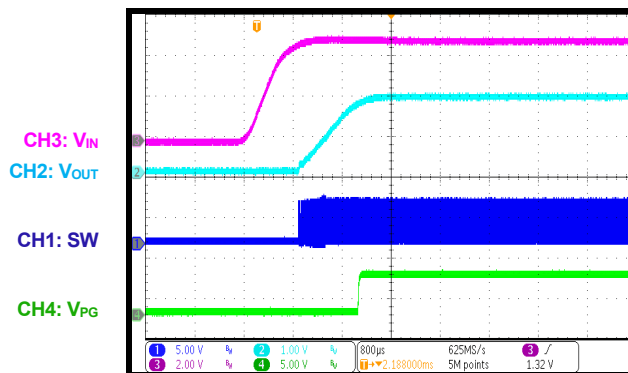
SCP Recovery
 $I_{OUT} = 4A$



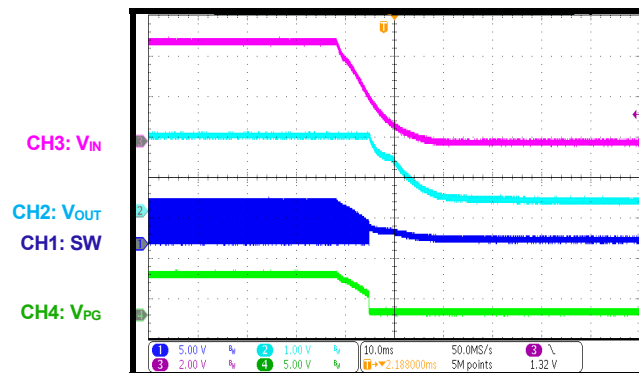
Short-Circuit Protection



PG Start-Up through VIN
 $I_{OUT} = 0A$, FCCM



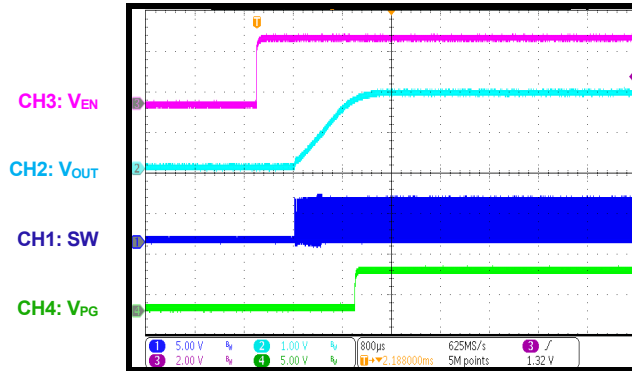
PG Shutdown through VIN
 $I_{OUT} = 0A$, FCCM



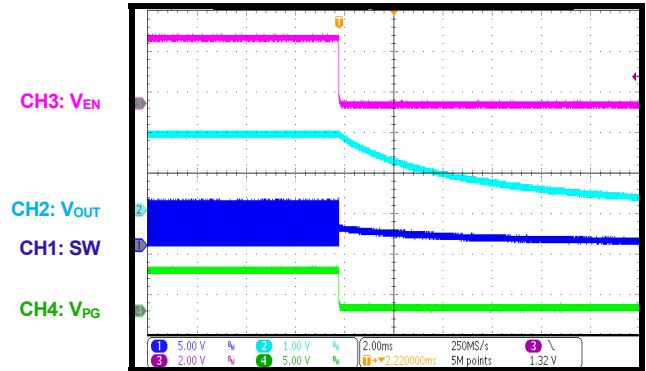
EVB TEST RESULTS (continued)

Performance curves and waveforms are tested on the evaluation board. $V_{IN} = 5V$, $V_{OUT} = 1.8V$, $T_A = 25^\circ C$, unless otherwise noted.

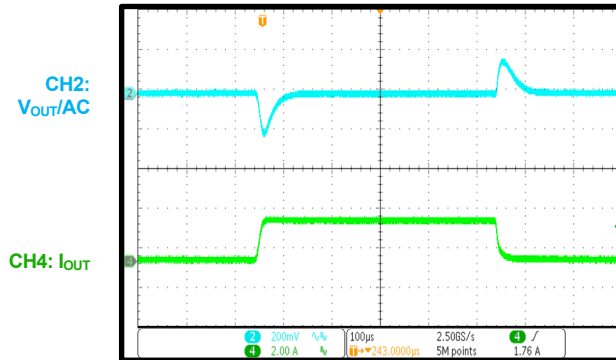
PG Start-Up through EN
 $I_{OUT} = 0A$, FCCM



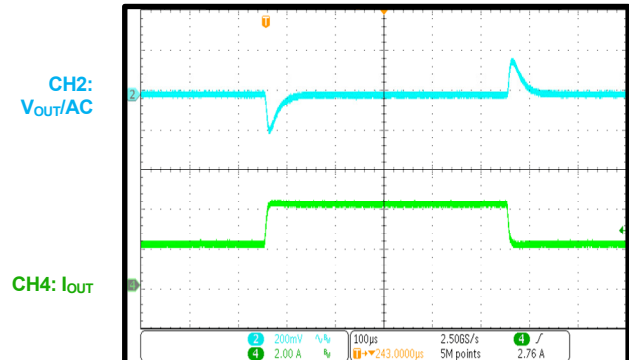
PG Shutdown through EN
 $I_{OUT} = 0A$, FCCM



Load Transient
 $I_{OUT} = 0A$ to $2A$, $1.6A/\mu s$, AAM mode



Load Transient
 $I_{OUT} = 2A$ to $4A$, $1.6A/\mu s$, AAM mode



PCB LAYOUT (2)

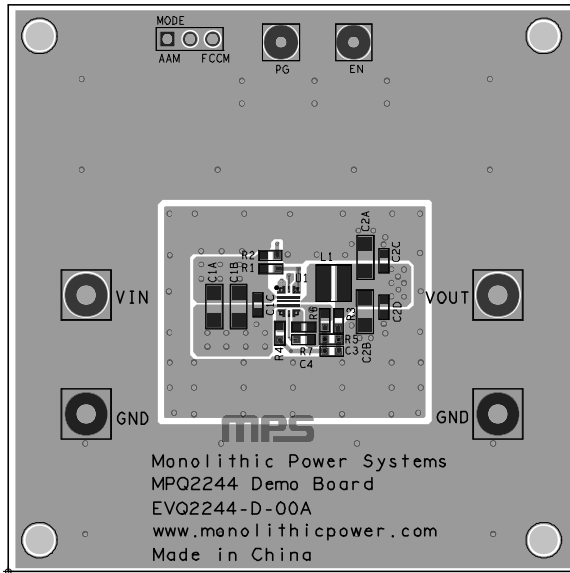


Figure 4: Top Silk and Top Layer

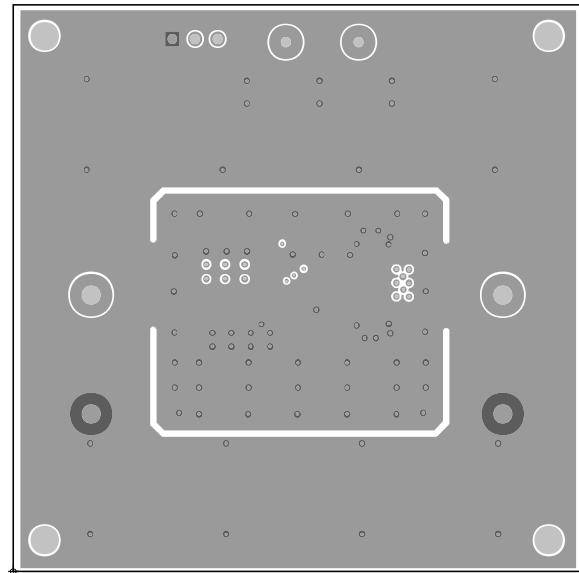


Figure 5: Mid-Layer 1

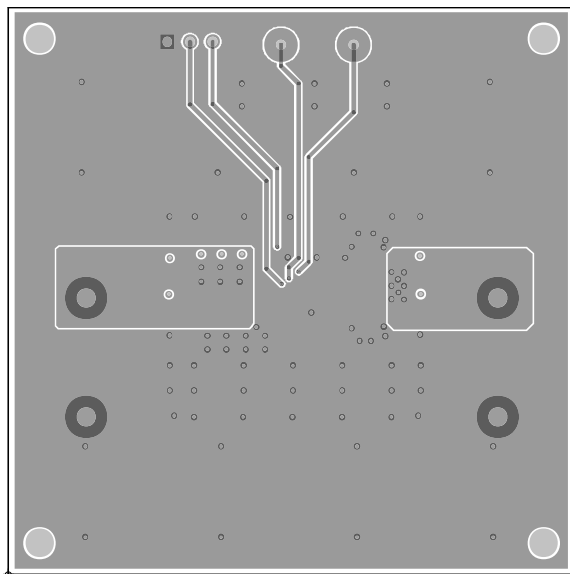


Figure 6: Mid-Layer 2

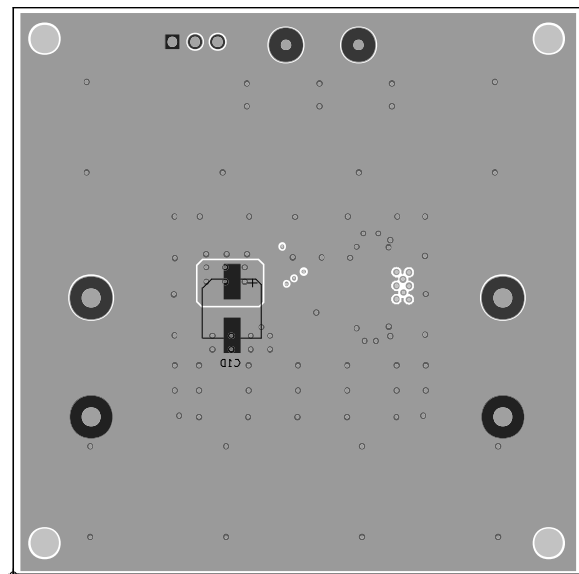


Figure 7: Bottom Layer and Bottom Silk

Note:

2) The copper thickness is 2oz.

REVISION HISTORY

Revision #	Revision Date	Description	Pages Updated
1.0	3/24/2023	Initial Release	-

Notice: The information in this document is subject to change without notice. Please contact MPS for current specifications. Users should warrant and guarantee that third-party Intellectual Property rights are not infringed upon when integrating MPS products into any application. MPS will not assume any legal responsibility for any said applications.