

**MPS**

**User Guide**

**MP8869W Evaluation Kit (EVKT-8869W)**

## Table of Contents

Overview.....	3
Section 1. Hardware Specifications .....	5
1.1 Personal Computer Requirements.....	5
1.2 EV8869W-L-00A Specifications.....	5
1.3 EVKT-USBI2C-02 Specifications .....	5
Section 2. Software Requirements .....	6
2.1 Software Installation Procedure .....	6
Section 3. Evaluation Kit Test Set-Up.....	7
3.1 Hardware Set-Up.....	7
3.2 Powering Up the EVB.....	7
3.3 Software Set-Up.....	7
3.4 Troubleshooting Tips .....	10
Section 4. Ordering Information.....	11

## Overview

### Introduction

The EVKT-8869W is an evaluation kit for the MP8869W. The MP8869W is a highly integrated, high-frequency, synchronous, step-down switcher with an I<sup>2</sup>C control interface. The MP8869W is optimized to support up to 12A continuous/15A peak output current over an input supply range from 3V to 18V with excellent load and line regulation. By using the I<sup>2</sup>C, users can set the current limit, slew rate, enable, power-saving mode, and output voltage. This device also features telemetry, which provides output voltage and output current monitoring via the I<sup>2</sup>C.

### Kit Contents

EVKT-8869W kit contents: (items below can be ordered separately).

#	Part Number	Item	Quantity
1	EV8869W-L-00A	MP8869WGL evaluation board	1
2	EVKT-USBI2C-02	Includes one USB to I <sup>2</sup> C communication interface, one USB cable, and one ribbon cable	1

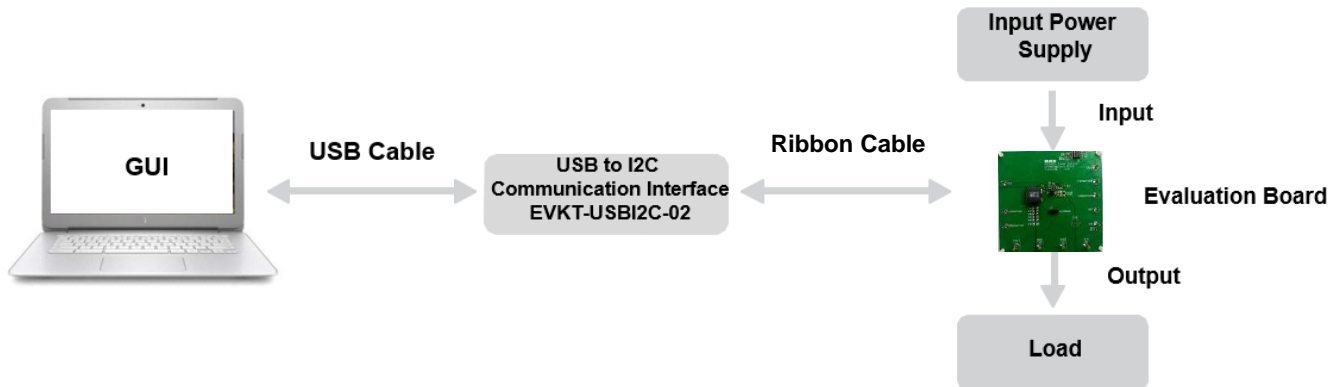


Figure 1: EVKT-8869W Evaluation Kit Set-Up

## Features and Benefits

The MP8869W is highly customizable. Users can program the MP8869W via the MPS I<sup>2</sup>C GUI.

*△ All changes made in I<sup>2</sup>C mode will NOT be retained once the EVB is powered down.*

Adjustable features:

I <sup>2</sup> C
<ul style="list-style-type: none"> <li>• Adjustable output</li> <li>• Adjustable slew rate</li> <li>• Selectable OVP, OCP mode</li> <li>• Selectable PFM mode</li> <li>• PG deglitch time</li> <li>• Selectable frequency</li> <li>• Soft stop</li> <li>• Adjustable current limit</li> <li>• Output current monitor</li> <li>• System enable (EN bit)</li> <li>• Status indication: OC, OTEW, OT, PG</li> </ul>

## Kit Specifications

Features	Specification
Supply for Board	3V to 18V
Operating Input Voltage	3V to 18V
Output Voltage (V <sub>OUT</sub> )	1V
Continuous Output Current (I <sub>OUT</sub> )	12A
Peak Output Current (I <sub>OUT</sub> )	15A
Operating Systems Supported	Windows XP, 7, or later
System Requirements	Minimum 22.2MB free
GUI Software	3 register controls: VSEL, System1, System2
EVB Size (LxW)	8.5cmx8.5cm

## Section 1. Hardware Specifications

### 1.1 Personal Computer Requirements

The following must be met to use the EVKT-8869W:

- Operating System of Windows XP, 7, or later
- Net Framework 4.0
- PC with a minimum of one available USB port
- At least 22.2MB of free space

### 1.2 EV8869W-L-00A Specifications

The EV8869W-L-00A is an evaluation board for the MP8869WGL. For more information, refer to the EV8869W-L-00A datasheet.



Figure 2: EV8869W -L-00A Evaluation Board

Feature	Specification
Supply for Evaluation Board	3V to 18V
Operating Input Voltage	3V to 18V
Output Voltage ( $V_{OUT}$ )	1V
Continuous Output Current ( $I_{OUT}$ )	12A
Peak Output Current ( $I_{OUT}$ )	15A
EVB Size (LxW)	8.5cmx8.5cm

### 1.3 EVKT-USBI2C-02 Specifications

The EVKT-USBI2C-02 communication interface connects the EVB, the PC, and its supporting accessories. It provides I<sup>2</sup>C and PMBus capabilities. Together with the MPS Virtual Bench Pro and GUI tools, it provides a quick and easy way to evaluate the performance of MPS digital products. For more details, refer to the EVKT-USBI2C-02 datasheet.



Figure 3: EVKT-USBI2C-02 Communication Interface

### Section 2. Software Requirements

#### 2.1 Software Installation Procedure

Programming occurs through the MPS I<sup>2</sup>C GUI. Follow the instructions below to download and install the software:

*Note: This software can be downloaded directly from the MPS website.*

1. Visit the MP88xx I<sup>2</sup>C GUI page at <https://www.monolithicpower.com/en/i2c-tool.html>.
2. Click the “Download” button in the upper right-hand corner.
3. Once the download has completed, double-click the .exe file to open the set-up guide (see Figure 4). If a protection window comes up, click “More info,” then click “Run anyway.”
4. Follow the prompts in the set-up guide.
5. Wait for the status screen to verify that installation is complete (see Figure 5).

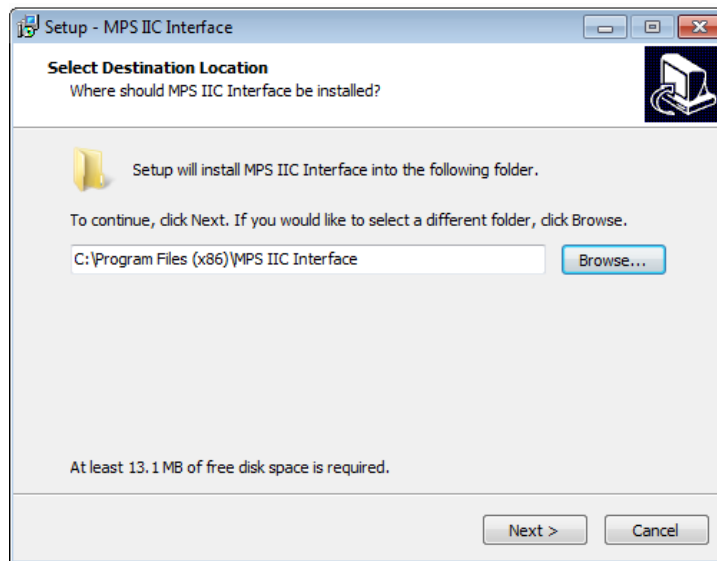


Figure 4: MPS I<sup>2</sup>C GUI Set-Up Guide

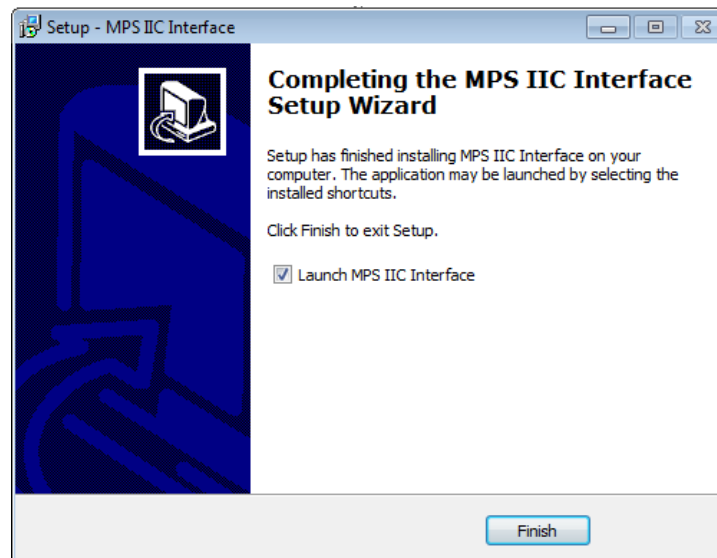


Figure 5: MPS I<sup>2</sup>C GUI Set-Up Success

## Section 3. Evaluation Kit Test Set-Up

### 3.1 Hardware Set-Up

The hardware must be configured properly prior to use. Use the USB cable to connect the EVKT-USBI2C-02 communication interface to the PC, and follow the instructions below to set up the EVB:

1. Locate the proper wires to connect the EVB to the EVKT-USBI2C-02 communication interface.
2. Connect SCL, SDA, and GND (see Figure 6). If needed, refer to the datasheet for further clarification.

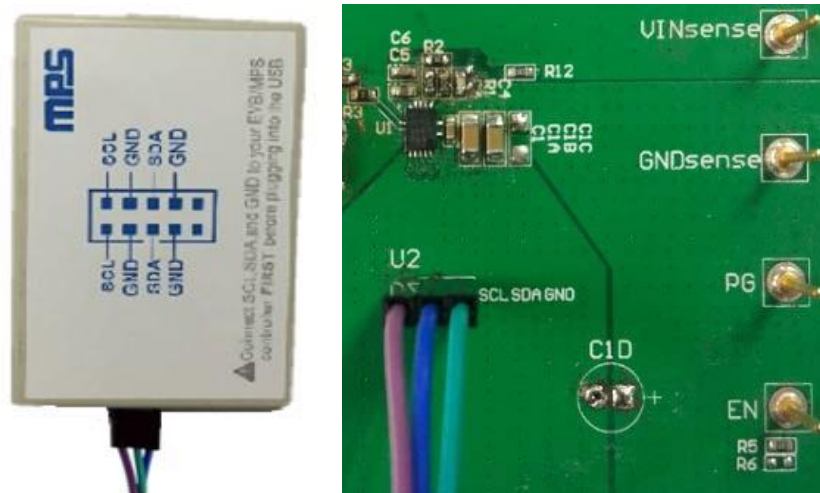


Figure 6: EVB to MPS I<sup>2</sup>C Communication Interface Wire Connection

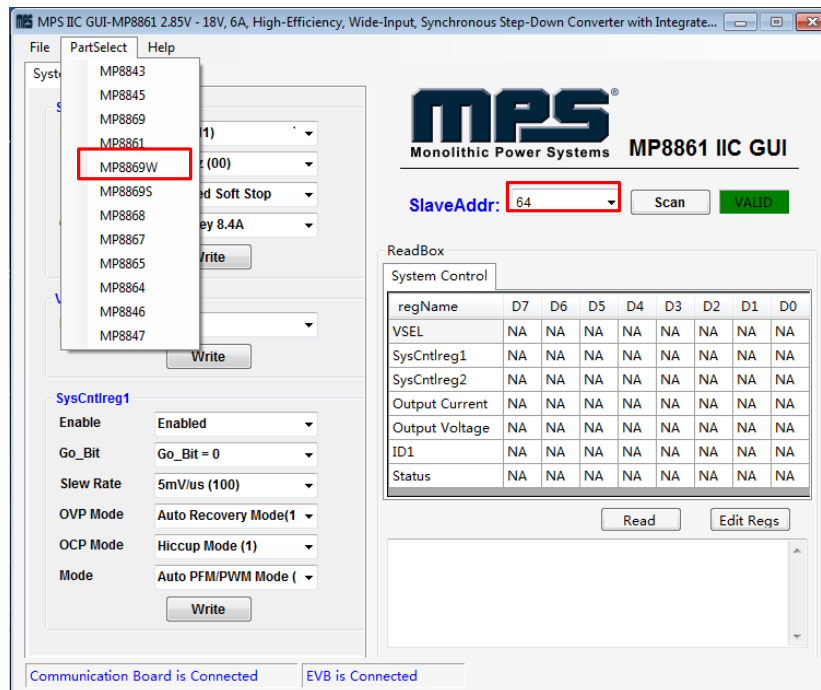
### 3.2 Powering Up the EVB

1. Connect the positive and negative terminals of the load to the VOUT and GND pins, respectively.
2. Preset the power supply output between 3V to 18V, then turn off the power supply.
3. Connect the positive and negative terminals of the power supply output to the VIN and GND pins, respectively.
4. Turn the power supply on. The MP8869W will enter the power-on sequence automatically.

### 3.3 Software Set-Up

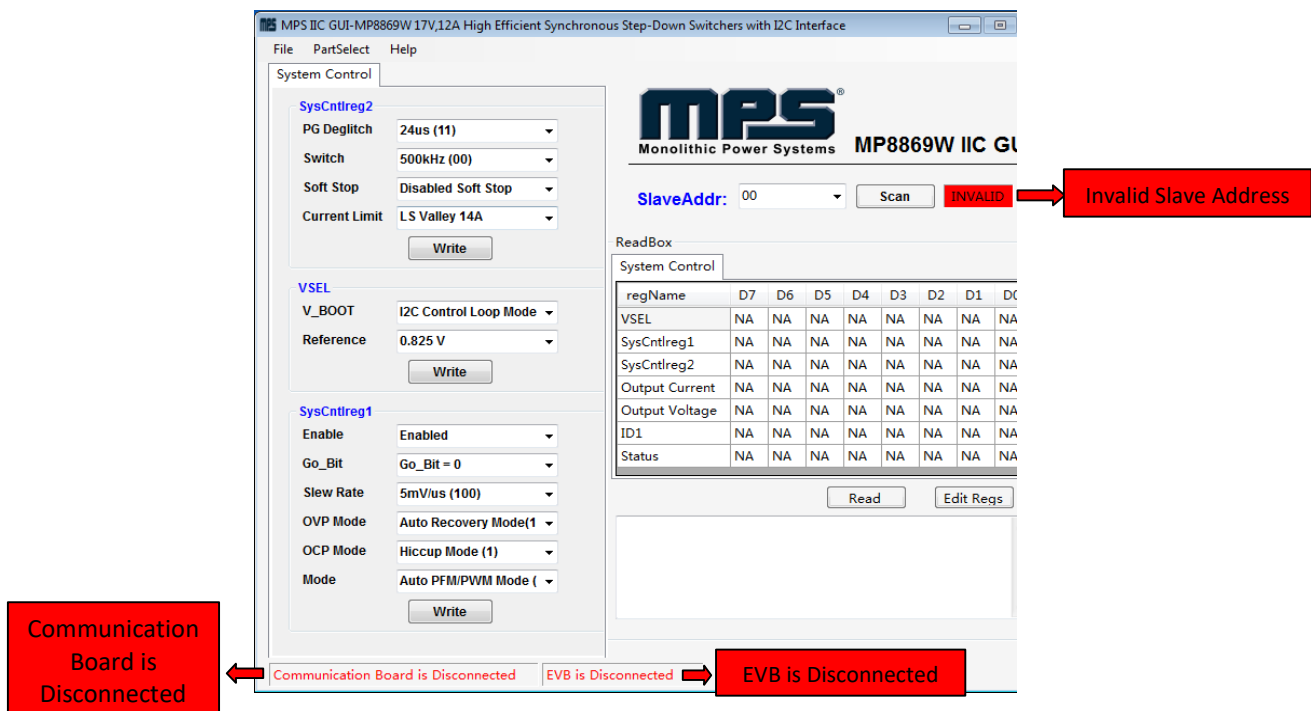
After connecting the hardware according to the above steps, follow the steps below to use the GUI software:

1. Start the software. It will automatically check the EVB connection.
  - If the connection is successful, the address will be listed in the “Slave Address” (see Figure 7).



**Figure 7: Appearance of Address Indicates Successful Connection**

- If not, a warning will appear at the bottom. There are two warnings users can expect (see Figure 8). Each warning means there is an invalid connection.
  - 1) “EVb is disconnected” means that the evaluation board is not connected.
  - 2) “Communication Board is disconnected” means that the USB I<sup>2</sup>C communication interface is not connected.



**Figure 8: Warning Indicates Unsuccessful Connection**



2. If the connection is successful, proceed to Step 3. Otherwise, check the connections between the EVB, communication interface, and PC. Re-plug the USB into the computer and restart the GUI.
3. Click the “Part Select” button to select the MP8869W (see Figure 7). The default GUI window is for the MP8861. The Register Control menu will appear on the left side. I<sup>2</sup>C register values will be read and displayed on the right side after clicking the “Read” button (see Figure 9).

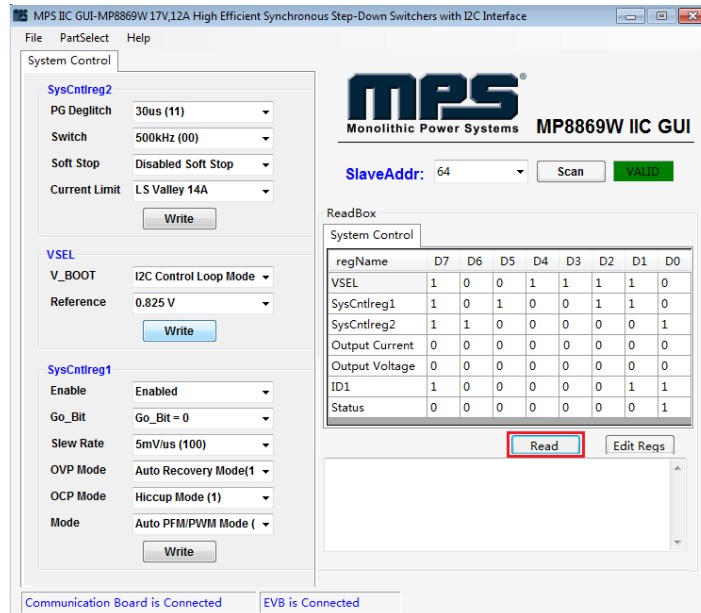


Figure 9: Values from I<sup>2</sup>C Shown in Table

4. Find the item you want to change, and select the desired value from the drop-down menu.
5. Click the “Read All” button to update values. The changed information will appear on the right side (see Figure 10).

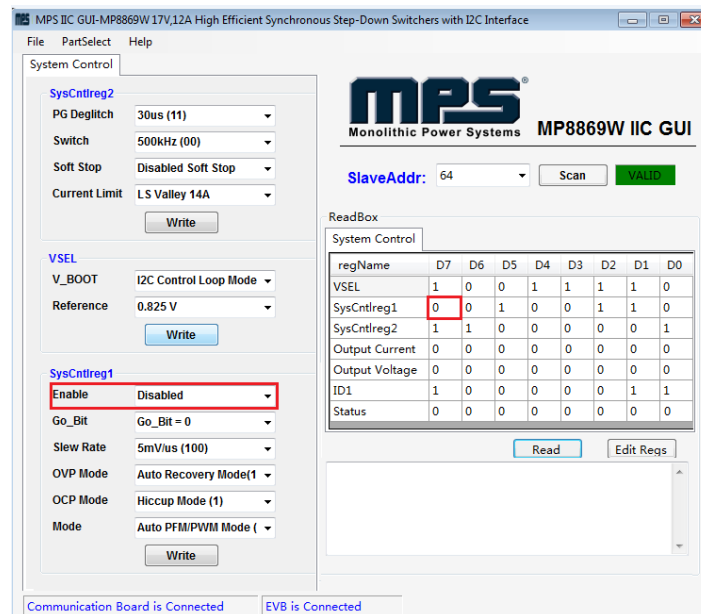


Figure 10: Refer to Datasheet to Translate 0s and 1s

*⚠ All changes made via the I<sup>2</sup>C will be restored to default values once the EVB is powered down.*

### 3.4 Troubleshooting Tips

Note: USBI2C-02 and USBI2C-01 drivers are not compatible. USBI2C-02 uses USBXpress and USBI2C-01 uses Cyusb3. USBI2C-02 is the recommended device for MPS PMBus and I<sup>2</sup>C.

#### EVKT-USBI2C-01

If the USBI2C-01 driver is not properly installed, manual installation is required. Follow the steps below:

1. Open the Device Manager and select “Update Driver Software” (see Figure 11).
2. Click “Browse My Computer for Driver Software,” find the downloaded driver, and install.

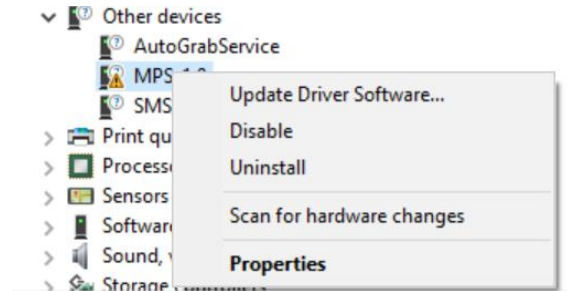
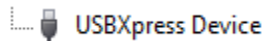


Figure 11: Updating the Driver Software

#### EVKT-USBI2C-02

If the USBI2C-02 driver is not properly installed, manual installation is required. Follow the steps below:

Note: Check driver version. Find “USBXpress Device” in the Device Manager under USB controllers.



Right-click and view properties. Check to make sure the driver version matches the newest version (see Figure 12).

1. Install the correct USBXpress “.exe” file.

Choose either 32-bit or 64-bit operating system.

32-bit: USBXpressInstaller\_x86.exe

64-bit: USBXpressInstaller\_x64.exe

2. Connect the EVKT-USBI2C-02 communication interface to the PC with the USB cable.

- **No Supply**

The MP8869W’s input pin has an under-voltage lockout (UVLO) detection circuit. If the input voltage (AVIN) is lower than the UVLO rising threshold, the MP8869W’s functions are disabled.

- **Shutdown Event**

If the MP8869W detects that the input voltage is lower than the UVLO falling threshold (enter no supply state) or over-temperature protection is triggered (enter power-off state), the MP8869W switches to no supply state or power-off state, regardless of the current state.

- **Thermal Recovery**

If the MP8869W is in a power-off state due to the die temperature exceeding the thermal protection threshold, the MP8869W enters a power-on sequence once the die’s temperature decreases.

- **Shutdown Sequence**

When the input voltage is lower than the UVLO falling threshold or the IC is over-temperature, the MP8869W immediately begins the shutdown sequence.

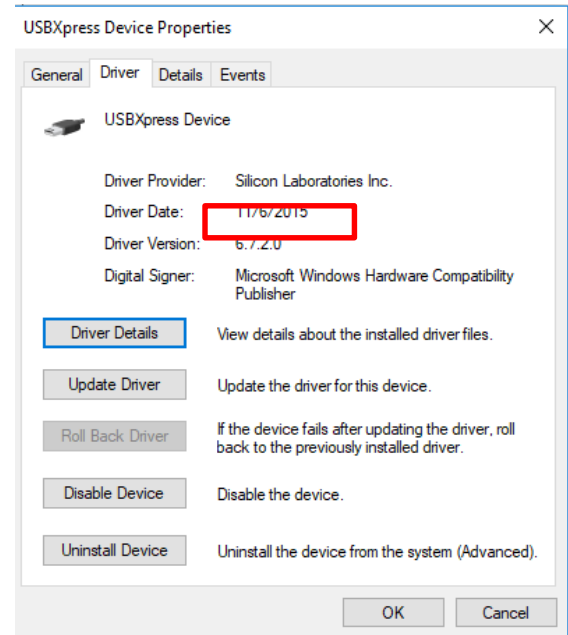


Figure 12: Correct Driver Version

## Section 4. Ordering Information

The components of the evaluation kit can be purchased separately depending on user needs.

Part Number	Description
EVKT-8869W	Complete evaluation kit
<b>Contents of EVKT-8869W</b>	
EV8869W-L-00A	MP8869WGL evaluation board
EVKT-USBI2C-02	Includes one USB to I <sup>2</sup> C communication interface, one USB cable, and one ribbon cable

**Order directly from [MonolithicPower.com](http://MonolithicPower.com).**