

DESCRIPTION

The EV4559-N-00A is an evaluation board for the MP4559, a high frequency step-down regulator with an integrated power MOSFET.

The MP4559 integrates a 250mΩ MOSFET that provides 1.5A load current over a wide operating input voltage of 3.8V to 55V.

Current mode control provides fast transient response and eases loop stabilization. An internal soft-start prevents inrush current at turn-on.

The EV4559-N-00A is a fully assembled and tested PCB. It generates a +3.3V output voltage at load current up to 1.5A from an 8V to 55V input range. Switching frequency is set at 500kHz.

ELECTRICAL SPECIFICATIONS

Parameter	Symbol	Value	Units
Input Voltage	V_{IN}	8 – 55	V
Output Voltage	V_{OUT}	3.3	V
Output Current	I_{OUT}	1.5	A

FEATURES

- 1.5A Output Current
- Programmable Switching Frequency up to 2MHz
- Wide 8V to 55V Operating Input Range
- Adjustable Output from 0.8V
- Fully Assembled and Tested

APPLICATIONS

- High Voltage Power Conversion
- Game Machines
- Automotive Systems
- Industrial Power Systems
- Distributed Power Systems
- Printer Systems
- Battery Powered Systems

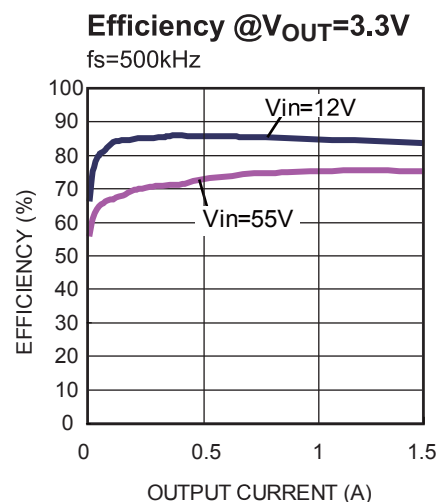
All MPS parts are lead-free and adhere to the RoHS directive. For MPS green status, please visit MPS website under Quality Assurance. "MPS" and "The Future of Analog IC Technology" are Registered Trademarks of Monolithic Power Systems, Inc.

EV4559-N-00A EVALUATION BOARD

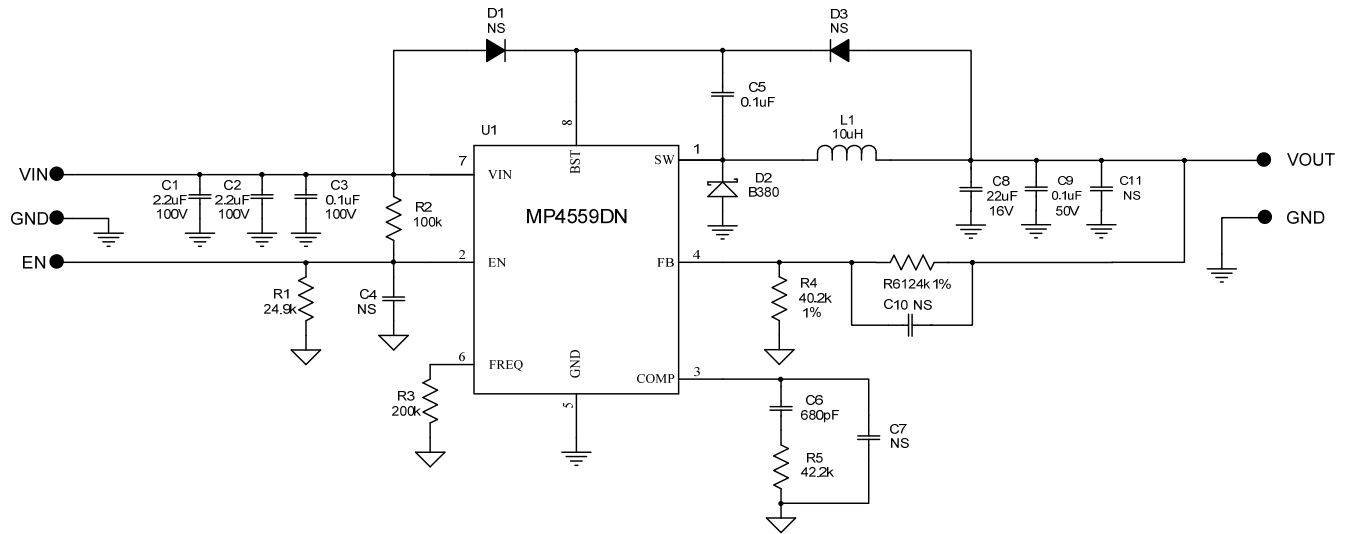


(L x W x H) 2.5" x 2.5" x 0.4"
(6.4cm x 6.4cm x 1.0cm)

Board Number	MPS IC Number
EV4559-N-00A	MP4559DN



EVALUATION BOARD SCHEMATIC



EV4559-N-00A BILL OF MATERIALS

Qty	Ref	Value	Description	Package	Manufacturer	Manufacturer_P/N
2	C1, C2	2.2µF	Ceramic Cap, 100V, X7R	1210	muRata	GRM32ER72A225KA35L
1	C3	0.1µF	Ceramic Cap, 100V, X7R	0805	TDK	C2012X7R2A104K
4	C4, C7, C10, C11	NS	Not Stuffed			
1	C5	100nF	Ceramic Cap, 50V, X7R	0603	TDK	C1608X7R1H104K
1	C6	680pF	Ceramic Cap, 50V, X7R	0603	TDK	C1608X7R1H681K
1	C8	22µF	Ceramic Cap, 16V, X7R	1210	muRata	GRM32ER71C226ME18L
1	C9	0.1µF	Ceramic Cap, 50V, X7R	0805	muRata	GRM21BR7H104KA01L
1	R1	24.9k	Film Res, 1%	0603	Yageo	RC0603FR-0724K9L
1	R2	100k	Film Res, 1%	0603	Yageo	RC0603FR-07100KL
1	R3	200k	Film Res, 1%	0603	Yageo	RC0603FR-07200KL
1	R4	40.2k	Film Res, 1%	0603	Yageo	RC0603FR-0740K2L
1	R5	42.2k	Film Res, 1%	0603	Yageo	RC0603FR-0742K2L
1	R6	124k	Film Res, 1%	0603	Yageo	RC0603FR-07124KL
1	R7	20	Film Res, 1%	0603	Yageo	RC0603FR-0720RL
2	D1, D3	NS	Not Stuffed			
1	D2		Diode Schottky, 80V, 3A	SMC	Diodes Inc.	B380-13-F
1	L1	10µH	Inductor, 4.3A, Rdc=26.5mΩ	SMD	Toko	D104C-919AQ-100M
1			Inductor, 4A, Rdc=36mΩ	SMD	TDK	CLF10040T-100M-H
1	U1	MP4559	Step-Down Regulator	SOIC8E	MPS	MP4559DN

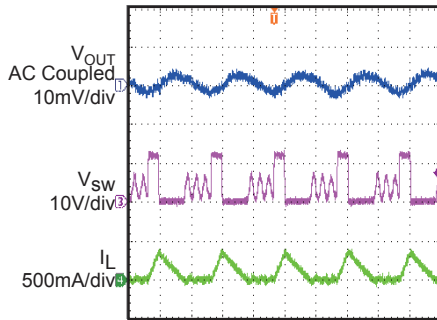
EVB TEST RESULTS

Performance waveforms are tested on the evaluation board.

$V_{IN} = 12V$, $V_{OUT} = 3.3V$, $T_A = 25^\circ C$, unless otherwise noted.

Output Voltage Ripple

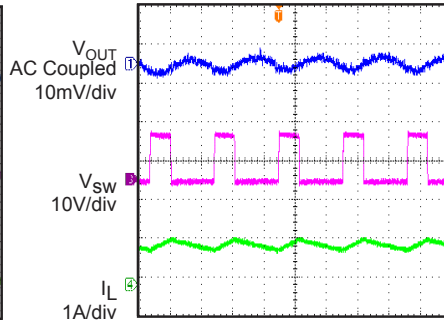
$I_{OUT}=0.1A$



1µs/div

Output Voltage Ripple

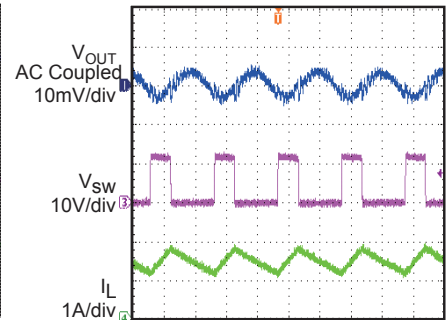
$I_{OUT}=1A$



1µs/div

Output Voltage Ripple

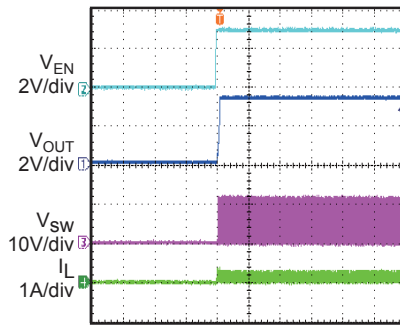
$I_{OUT}=1.5A$



1µs/div

Start up

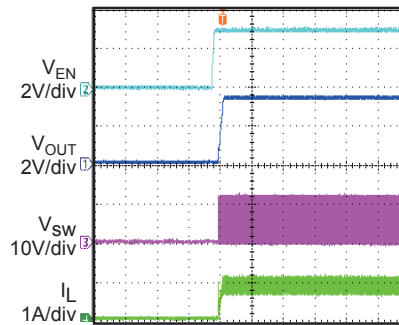
$I_{OUT}=0.1A$



10ms/div

Start up

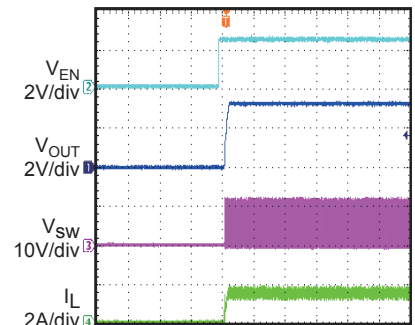
$I_{OUT}=1A$



4ms/div

Start up

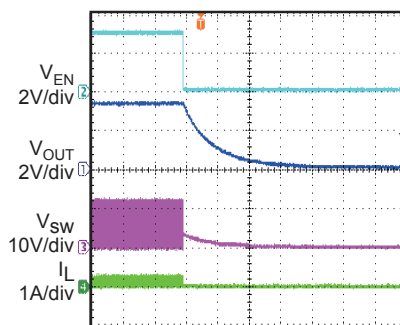
$I_{OUT}=1.5A$



4ms/div

Shut down

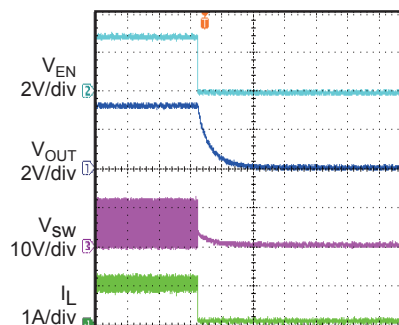
$I_{OUT}=0.1A$



1ms/div

Shut down

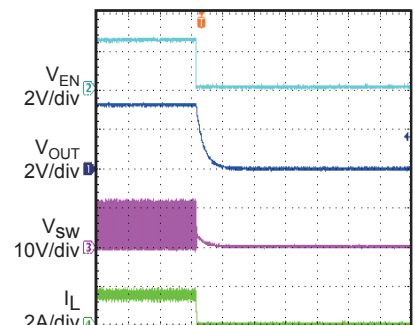
$I_{OUT}=1A$



200µs/div

Shut down

$I_{OUT}=1.5A$



200µs/div

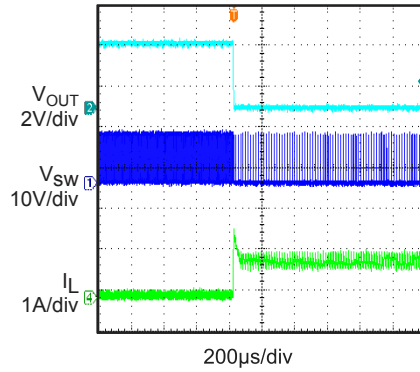
EVB TEST RESULTS *(continued)*

Performance waveforms are tested on the evaluation board.

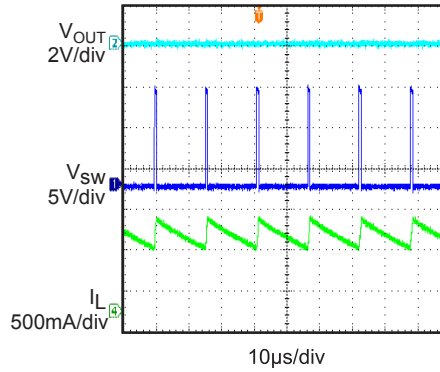
$V_{IN} = 12V$, $V_{OUT} = 3.3V$, $T_A = 25^\circ C$, unless otherwise noted.

Short Circuit Entry

$I_{OUT} = 0.1A$ to Short

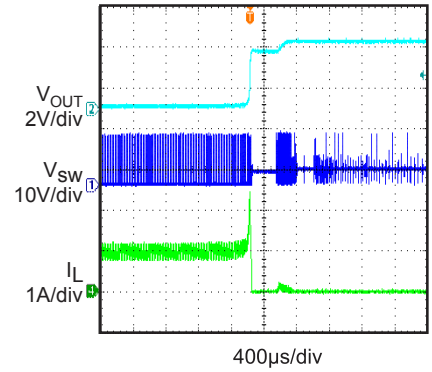


Short Circuit Steady State



Short Circuit Recovery

$I_{OUT} = \text{Short to } 0A$



PRINTED CIRCUIT BOARD LAYOUT

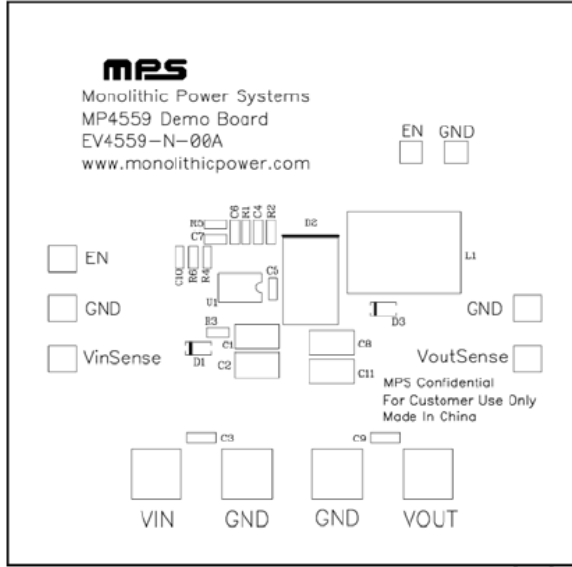


Figure 1—Top Silk Layer

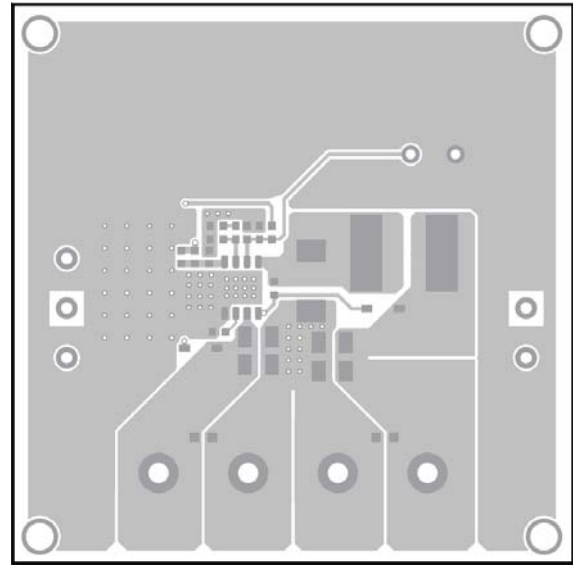


Figure 2—Top Layer

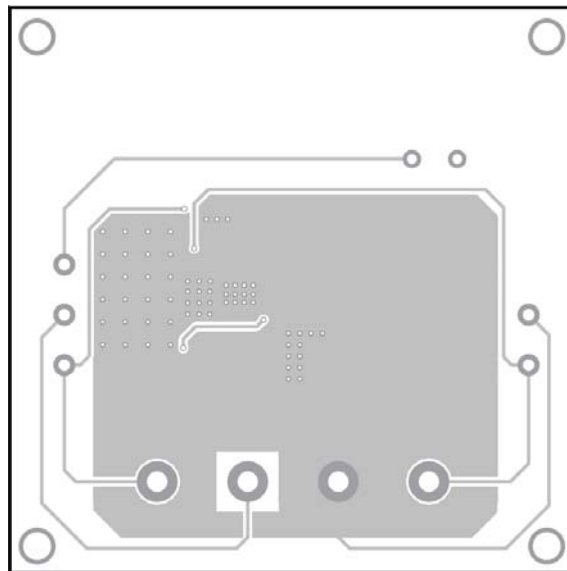


Figure 3—Bottom Layer

QUICK START GUIDE

1. Connect the positive and negative terminals of the load to the VOUT and GND pins, respectively.
2. Preset the power supply output to between 8 and 55V, and then turn it off.
3. Connect the positive and negative terminals of the power supply output to the VIN and GND pins, respectively.
4. Turn the power supply on. The MP4559DN will automatically startup.
5. To use the Enable function, apply a digital input to the EN pin. Drive EN higher than 1.55V to turn on the regulator, drive EN less than 1.23V to turn it off.
6. An input under voltage lockout (UVLO) function is implemented by the addition of a resistor divider R1 and R2. The EN threshold is 1.23V (falling edge), so V_{IN} UVLO threshold is $1.23V \times (1 + \frac{R2}{R1})$. It is preset to around 6.2V on this board.
7. Use R4 and R6 to set the output voltage with $V_{FB} = 0.8V$. For $R4 = 40.2k\Omega$, R6 can be determined by: $R6 = 50.25 \times (V_{OUT} - 0.8)$ (k Ω). Follow the Application Information section in the device datasheet to recalculate the compensation, inductor and output capacitor values when output voltage is changed.

NOTICE: The information in this document is subject to change without notice. Users should warrant and guarantee that third party Intellectual Property rights are not infringed upon when integrating MPS products into any application. MPS will not assume any legal responsibility for any said applications.