

DESCRIPTION

The EV2386-G-00A is an evaluation board for MP2386, a fully integrated high frequency synchronous rectified step-down switch mode converter. It offers super compact solution to achieve 8A continuous output current over a wide input supply range.

The MP2386 operates at high efficiency over a wide output current load range based on MPS proprietary switching loss reduction tech and internal Low Ron Power MOSFETs. Adaptive Constant-On-Time (COT) control mode provides fast transient response and eases loop stabilization. The DC auto tune loop combined with the remote differential sense provides good load and line regulation.

Full protection features include OCP, OVP, UVP and thermal shut down.

The converter requires minimum number of external components and is available in QFN 2mmx2mm package.

ELECTRICAL SPECIFICATION (1)

Parameter	Symbol	Value	Units
Input Voltage	V _{IN}	8 to 24	V
Output Voltage	V _{OUT}	1	V
Continuous Output Current	I _{OUT}	8	A

Notes:

1) For different Input/output voltage specs and different output capacitor/inductor may need change the application circuit parameters.

FEATURES

- Wide 4.5V to 24V Operating Input Range
- 105µA low quiescent Current
- 8A Continuous Output Current
- Adaptive COT for Fast transient
- DC Auto Tune Loop and Remote Differential sense
- Low R_{DS(ON)} Internal Power MOSFETs
- Proprietary Switching Loss Reduction Technique
- Power Good Indication
- Stable with POSCAP and Ceramic Cap
- Internal Soft Start
- Output Discharge
- OCP, OVP, UVP and Thermal Shutdown
- QFN-11(2mm x 2mm) Package

APPLICATIONS

- Laptop Computer
- Tablet PC
- Networking Systems
- Server
- Distributed Power Systems

All MPS parts are lead-free, halogen free, and adhere to the RoHS directive. For MPS green status, please visit MPS website under Quality Assurance.

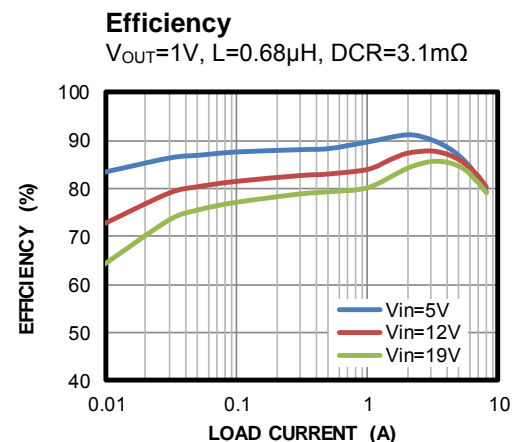
"MPS" and "The Future of Analog IC Technology" are Registered Trademarks of Monolithic Power Systems, Inc.

EV2386-G-00A EVALUATION BOARD

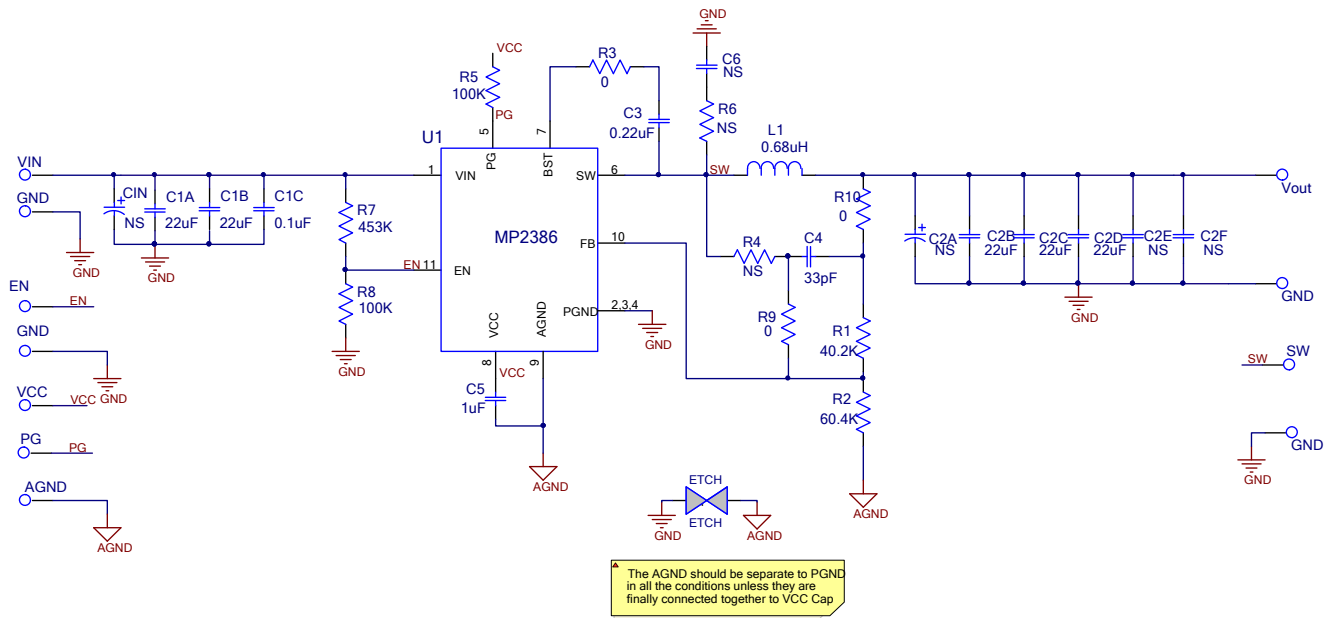


(L x W) 64mm x 64mm

Board Number	MPS IC Number
EV2386-G-00A	MP2386GG



EVALUATION BOARD SCHEMATIC (2)



Notes:

- EN resistor divider sets the VIN rising threshold to 7.5V. For 5V input application, change R7 to 200K.

EV2386-G-00A BILL OF MATERIALS

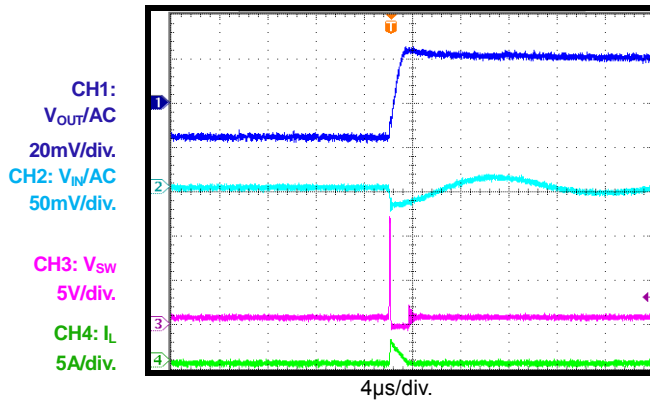
Qty	Des	Value	Description	Package	Manufacture	Manufacture_PN
2	C1A, C1B	22 μ F	Ceramic Capacitor;25V;X5R;	1206	muRata	GRM31CR61E226KE15L
1	C1C	0.1 μ F	Ceramic Capacitor;25V;X7R;	0603	muRata	GRM188R71E104KA01D
3	C2B,C2C, C2D	22 μ F	Ceramic Capacitor;16V;X5R;	0805	muRata	GRM21BR61C226ME44L
0	C1N,C2A, C2E,C2F, C6	NS				
1	C3	0.22 μ F	Ceramic Capacitor;16V;X7R	0603	muRata	GRM188R71C224KA01D
1	C4	33pF	Ceramic Cap.,50V,C0G	0603	muRata	GRM1885C1H330JA01D
1	C5	1 μ F	Ceramic Capacitor;16V;X7R	0603	muRata	GRM188R71C105KE15D
1	R1	40.2k	Film Res,1%	0603	Yageo	RC0603FR-0740K2L
1	R2	60.4k	Film Res,1%	0603	Yageo	RC0603FR-0760K4L
3	R3,R9,R10	0R	Film Res,1%	0603	Yageo	RC0603FR-070RL
0	R4,R6	NS				
2	R5,R8	100k	Film Res,1%	0603	Yageo	RC0603FR-07100KL
1	R7	453k	Film Res,1%	0603	Yageo	RC0603FR-07453KL
1	L1	0.68 μ H	Inductor, DCR=3.1m Ω ,Isat=20A	SMD	Wurth	744311068
1	U1	MP2386	Synchronous Step-Down Converter	QFN2*2	MPS	MP2386GG

EVB TEST RESULTS

$V_{IN} = 12V$, $V_{OUT} = 1V$, $L = 0.68\mu H$, $T_A = +25^\circ C$, unless otherwise noted.

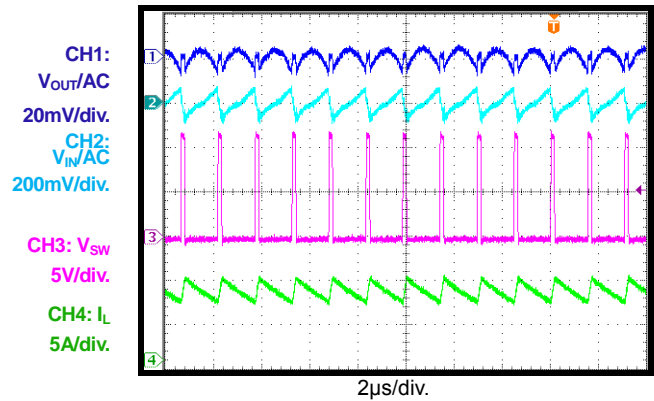
Input/Output Ripple

$I_{OUT} = 0A$



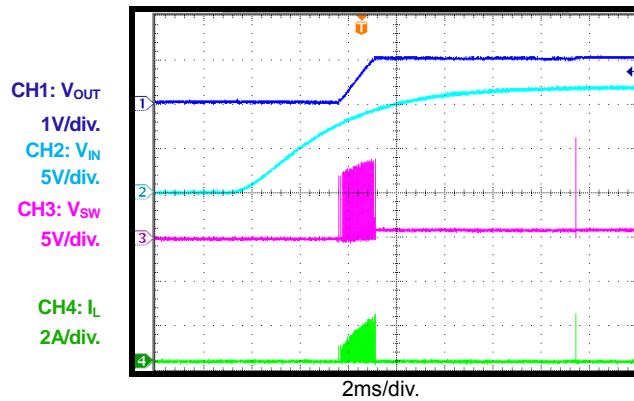
Input/Output Ripple

$I_{OUT} = 8A$



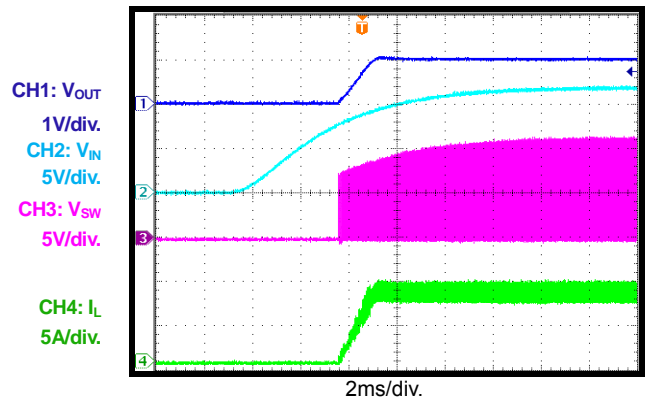
Startup through Input Voltage

$I_{OUT} = 0A$



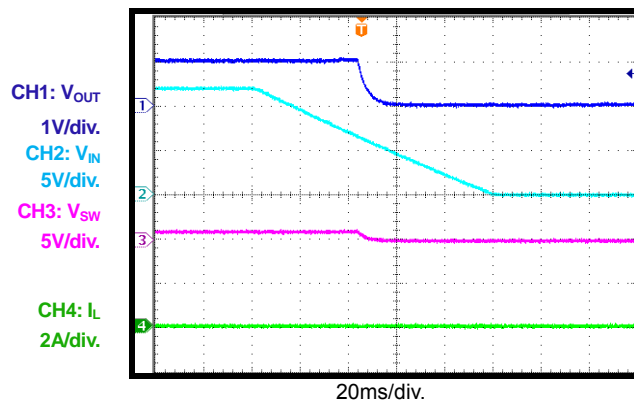
Startup through Input Voltage

$I_{OUT} = 8A$



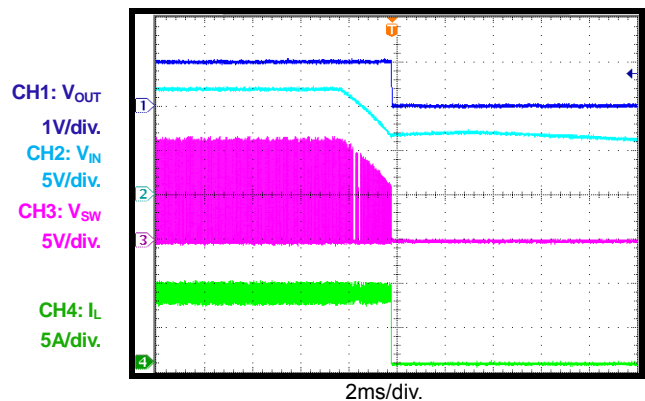
Shutdown through Input Voltage

$I_{OUT} = 0A$



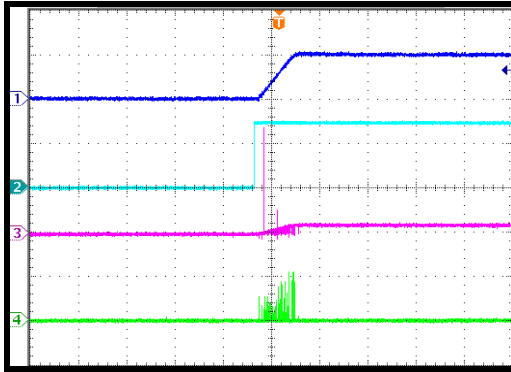
Shutdown through Input Voltage

$I_{OUT} = 8A$



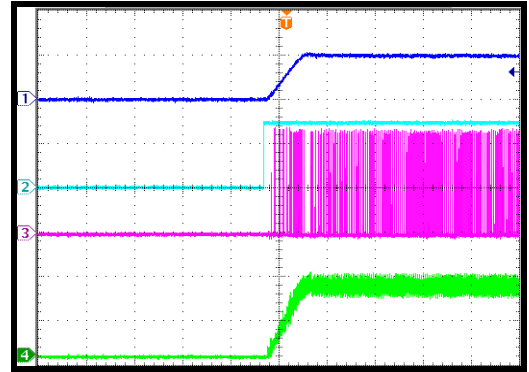
EVB TEST RESULTS *(continued)*
 $V_{IN} = 12V$, $V_{OUT} = 1V$, $L = 0.68\mu H$, $T_A = +25^\circ C$, unless otherwise noted.

Startup through Enable
 $I_{OUT} = 0A$

 CH1: V_{OUT}
 1V/div.
 CH2: V_{EN}
 2V/div.
 CH3: V_{SW}
 5V/div.
 CH4: I_L
 2A/div.


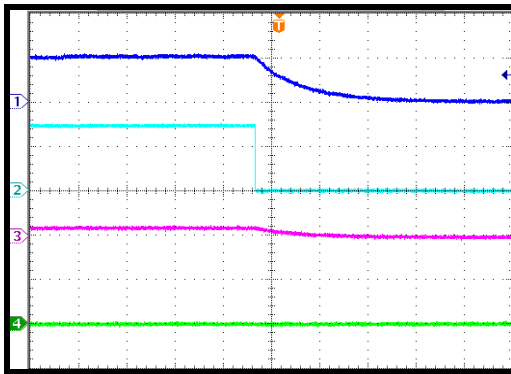
2ms/div.

Startup through Enable
 $I_{OUT} = 8A$

 CH1: V_{OUT}
 1V/div.
 CH2: V_{EN}
 2V/div.
 CH3: V_{SW}
 5V/div.
 CH4: I_L
 5A/div.


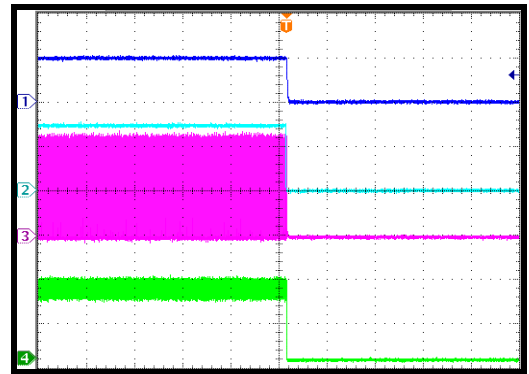
2ms/div.

Shutdown through Enable
 $I_{OUT} = 0A$

 CH1: V_{OUT}
 1V/div.
 CH2: V_{EN}
 2V/div.
 CH3: V_{SW}
 5V/div.
 CH4: I_L
 2A/div.


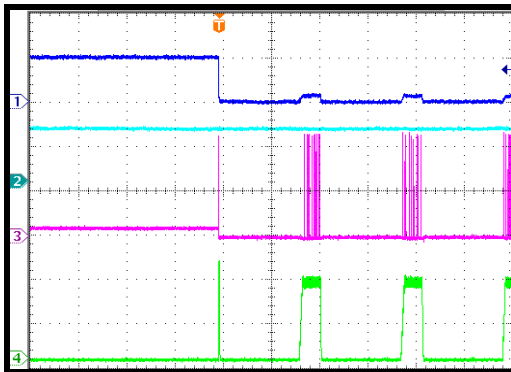
4ms/div.

Shutdown through Enable
 $I_{OUT} = 8A$

 CH1: V_{OUT}
 1V/div.
 CH2: V_{EN}
 2V/div.
 CH3: V_{SW}
 5V/div.
 CH4: I_L
 5A/div.


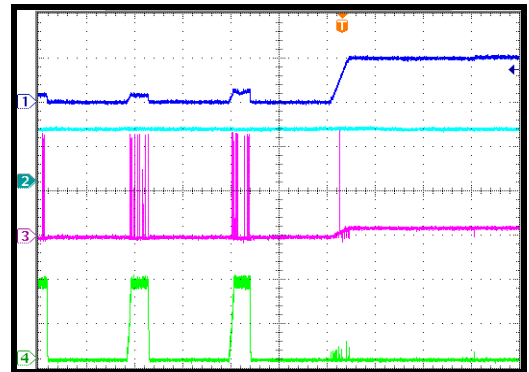
400µs/div.

Short Circuit Entry

 CH1: V_{OUT}
 1V/div.
 CH2: V_{IN}
 10V/div.
 CH3: V_{SW}
 5V/div.
 CH4: I_L
 5A/div.


4ms/div.

Short Circuit Recovery

 CH1: V_{OUT}
 1V/div.
 CH2: V_{IN}
 10V/div.
 CH3: V_{SW}
 5V/div.
 CH4: I_L
 5A/div.


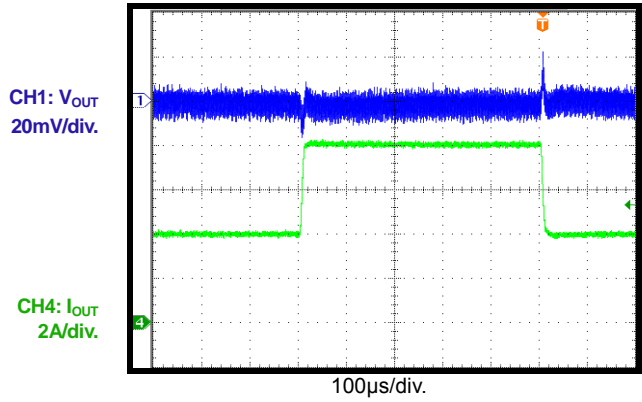
4ms/div.

EVB TEST RESULTS *(continued)*

$V_{IN} = 12V$, $V_{OUT} = 1V$, $L = 0.68\mu H$, $T_A = +25^\circ C$, unless otherwise noted.

Load Transient

$I_{OUT} = 4A$ to $8A$



PRINTED CIRCUIT BOARD LAYOUT

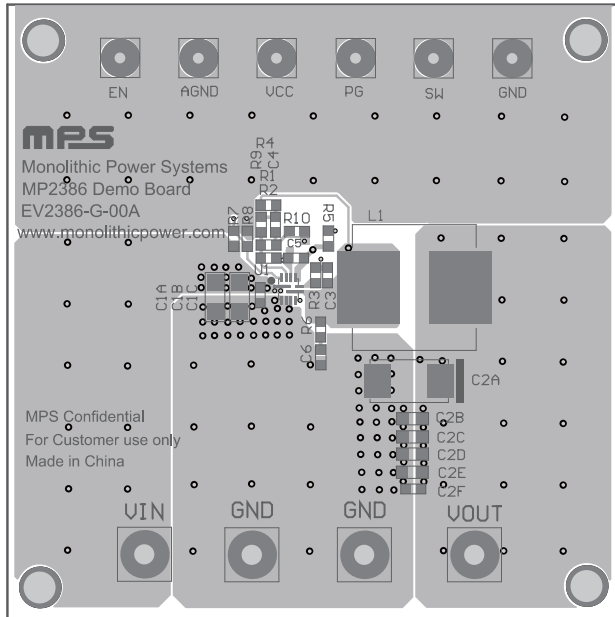


Figure 1—Top Layer and Silk

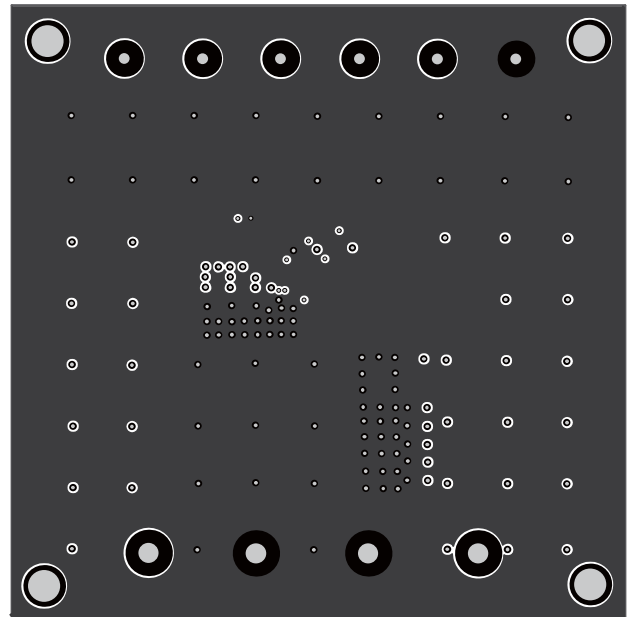


Figure 2—Inner Layer 1

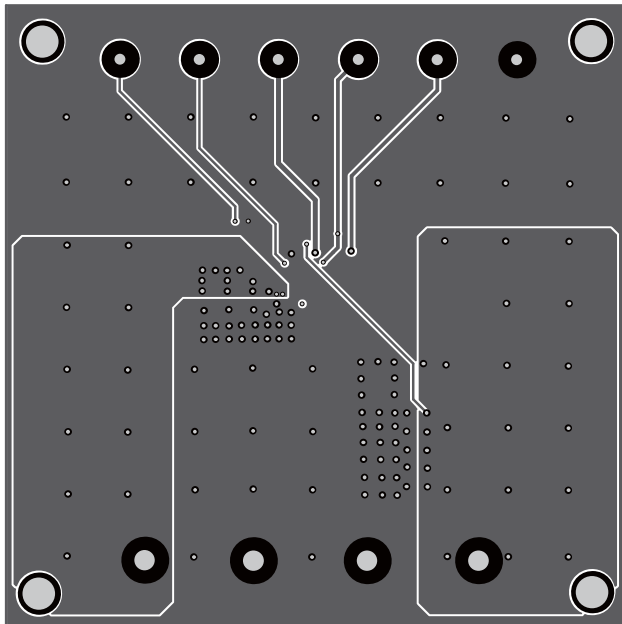


Figure 3—Inner Layer 2

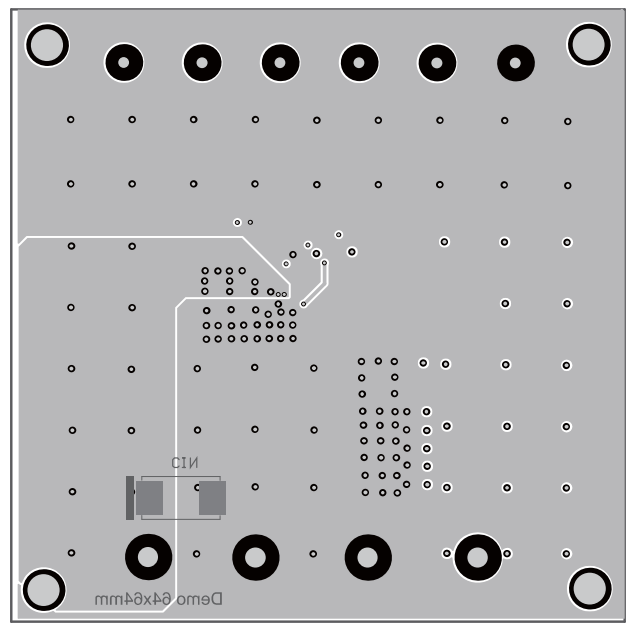


Figure 4—Bottom Layer and Silk

QUICK START GUIDE

1. Preset the input power supply output between 8V and 24V.
2. Turn off the input power supply.
3. Connect the positive and negative terminals of the load to the VOUT and GND pins, respectively.
4. Connect the positive and negative terminals of the input power supply output to the VIN and GND pins, respectively.
5. Turn input power supply on after making connections. The board will automatically start up.
6. To use the Enable function, apply a digital input to the EN pin. Drive EN higher than 1.4V to turn on the regulator, or less than 0.4V to turn it off. Do not make the EN voltage over 4.5V.

NOTICE: The information in this document is subject to change without notice. Users should warrant and guarantee that third party Intellectual Property rights are not infringed upon when integrating MPS products into any application. MPS will not assume any legal responsibility for any said applications.